

HMF 6020-K

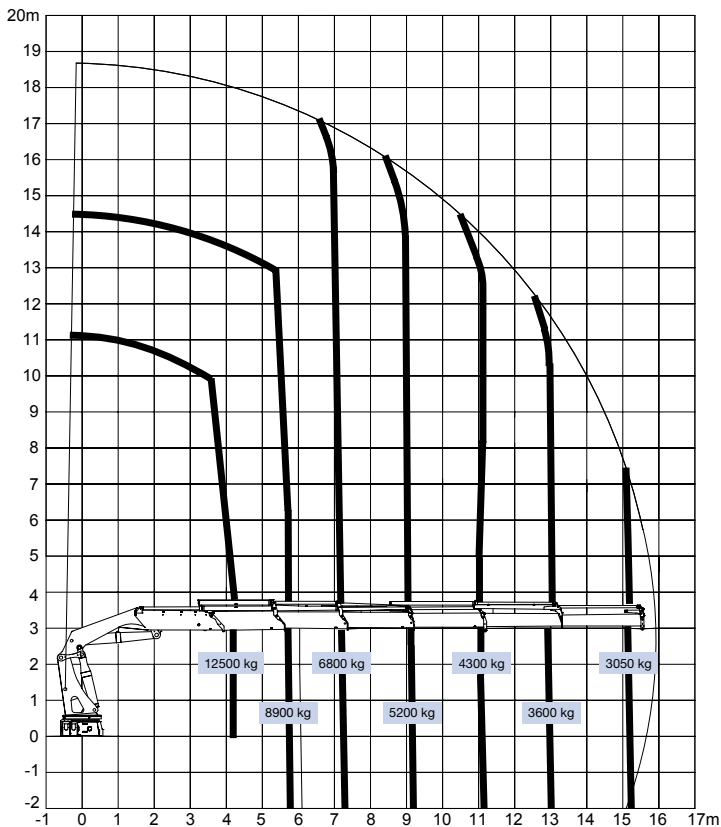


- power to lift.

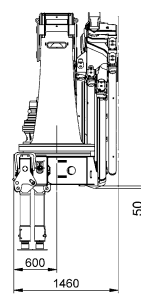
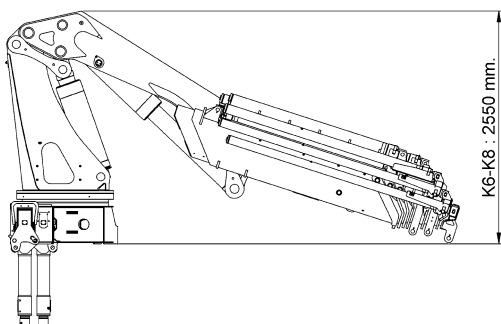
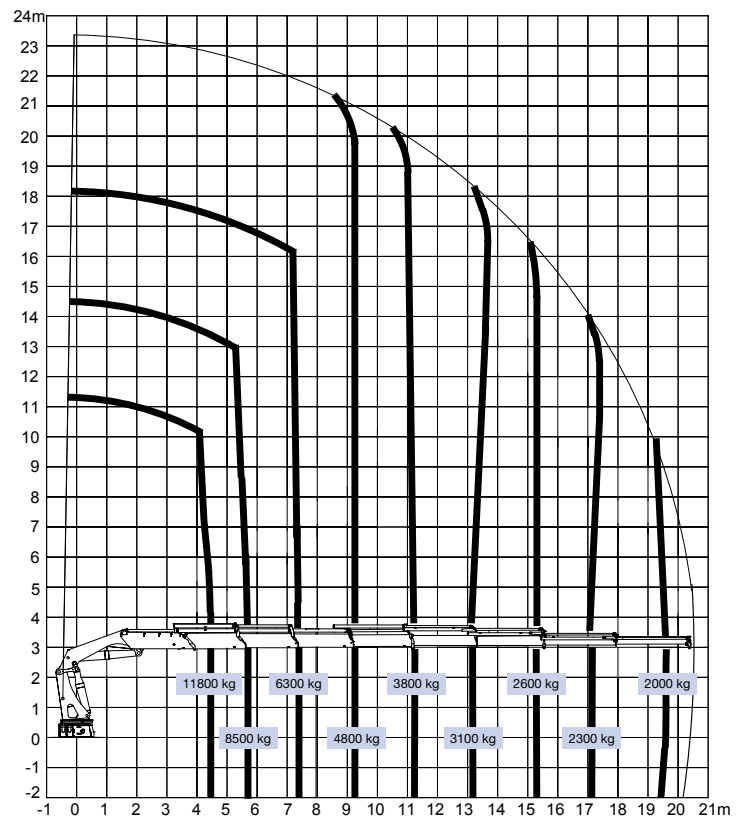
HMF 6020-K

Kraangroep B3		6020-OK2	6020-OK3	6020-OK4	6020-OK5	6020-OK6	6020-K6	6020-K7	6020-K8
Lastmoment	tm	56,6	55,1	54,1	53,4	52,7	52,9	52,3	51,6
Hydraulisch bereik	m	8,3	10,4	12,4	14,7	17,0	15,8	18,2	20,6
Zwenkmoment	kgm	7000	7000	7000	7000	7000	7000	7000	7000
Zwenkbereik	°	kont.	kont.	kont.	kont.	kont.	kont.	kont.	kont.
Hoogte ingevouwen	mm	2425	2425	2425	2425	2425	2425	2425	2425
Breedte ingevouwen	mm	2500	2500	2500	2500	2500	2500	2500	2500
Inbouwbreedte, excl. extra vent.	mm	1325	1325	1325	1325	1325	1460	1460	1460
Steunpootspreiding std.	mm	6325	6325	6325	6325	6325	8420	8420	8420
Steunpootspreiding spec.	mm	8420	8420	8420	8420	8420	6325	6325	6325
Gewicht excl. steunpoten	kg	4415	4715	5015	5285	5525	5465	5665	5865
Gewicht steunpoten std.	kg	700	700	700	700	700	700	700	700
Werkdruk	MPa	35,0	35,0	35,0	35,0	35,0	35,0	35,0	35,0
Pomppobbrengst	l/min	1 x 80 / 1 x 120 / 2 x 65 / 2 x 110							
Inhoud olietank (separate tank)	l	210-420							
Benodigd vermogen	kW	48-122							
Haakhoogte 1,5 m uit kolom	m	3,2	3,1	3,0	2,9	2,8	3,1	2,8	2,8

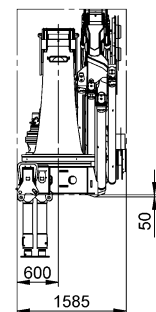
HMF 6020-K6



HMF 6020-K8

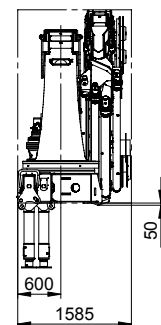
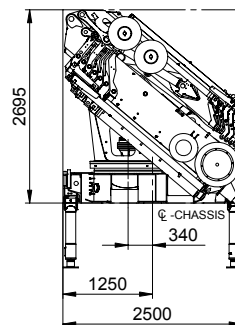
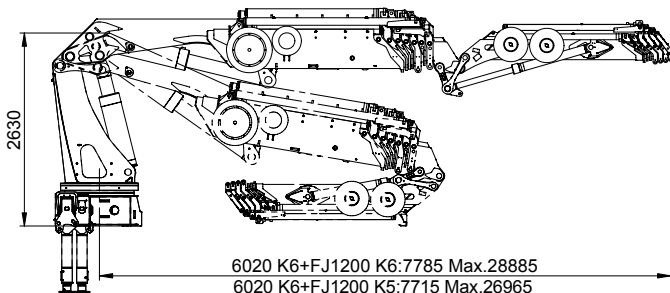
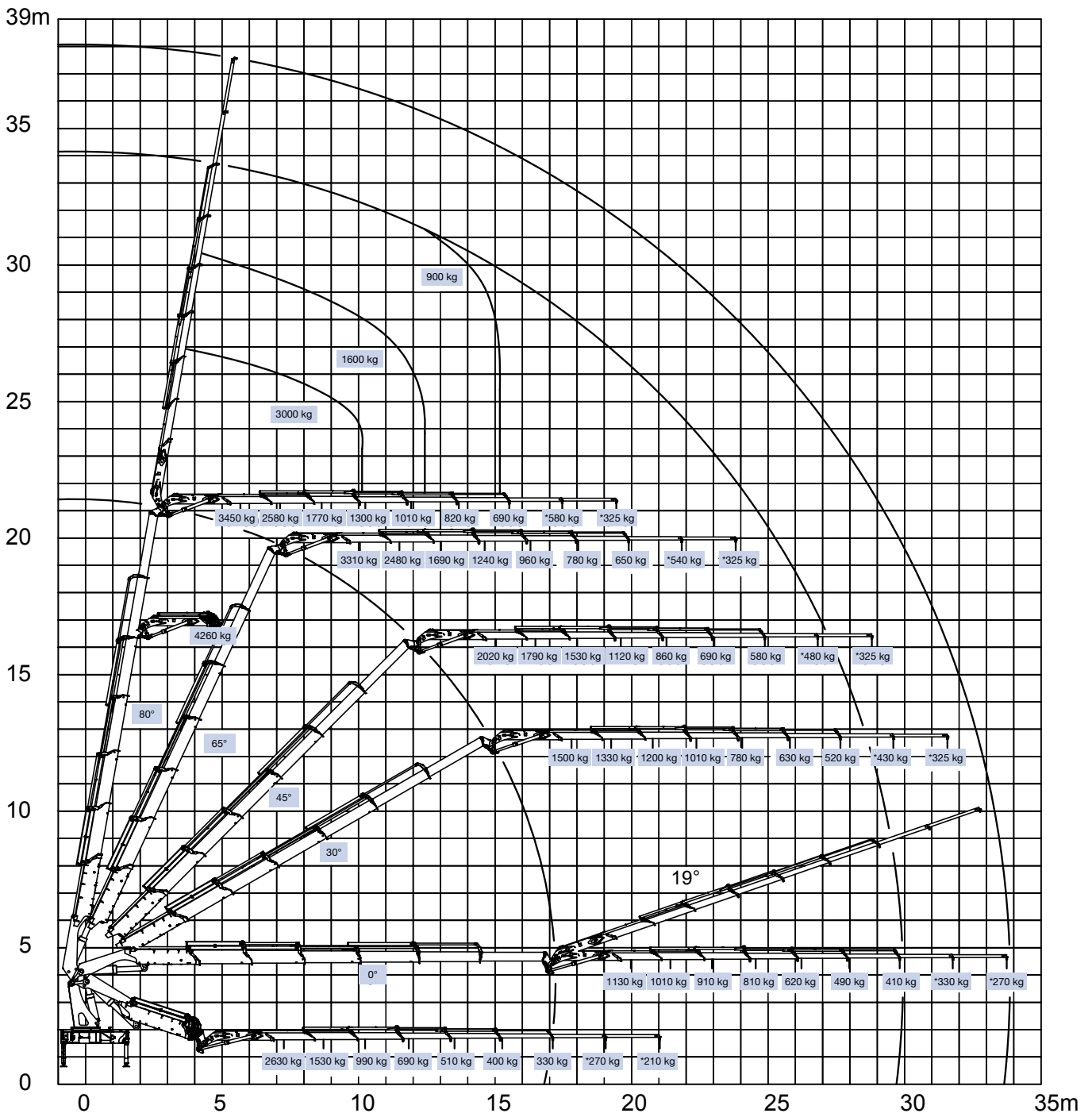


HMF 6020-K6
HMF 6020-K8



HMF 6020-K6
+ FJ 1200-K6

6020-OK6 + FJ1200-K6

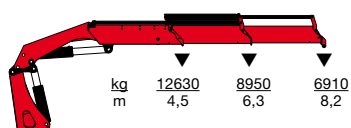


- power to lift.

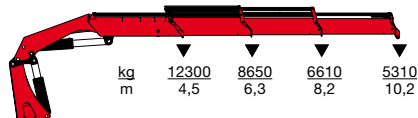
HMF 6020-K



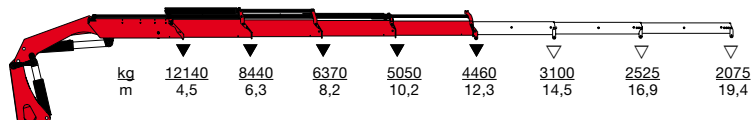
HMF 6020-OK2



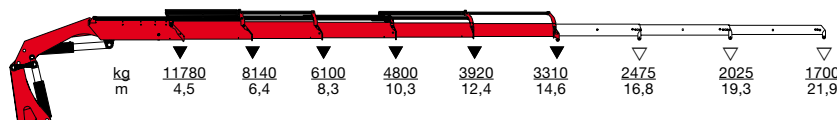
HMF 6020-OK3



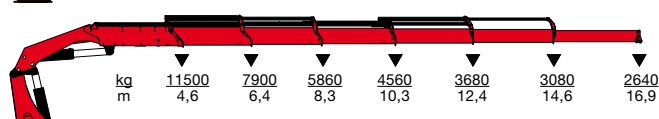
HMF 6020-OK4



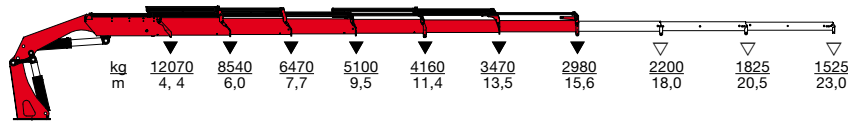
HMF 6020-OK5



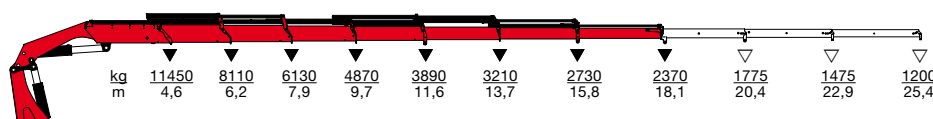
HMF 6020-OK6



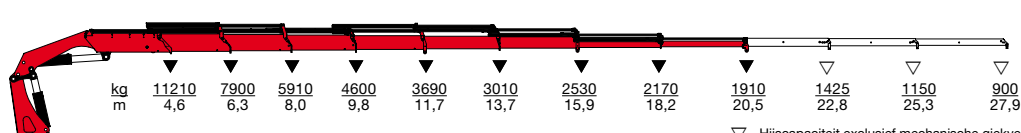
HMF 6020-K6



HMF 6020-K7



HMF 6020-K8



▽ Hijscapaciteit exclusief mechanische giekverlenging
 ▼ Hijscapaciteit inclusief mechanische giekverlenging

Z008465-2



Højbjerg Maskinfabrik A/S • Oddervej 200 • DK-8270 Højbjerg
 Tel.: +45 8627 0800 • Fax: +45 8627 0744 • info@hmf.dk

www.hmf.dk

Wij behouden het recht om wijzigingen en/of
 modificaties door te voeren zonder kennisgeving.