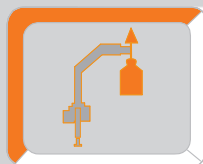
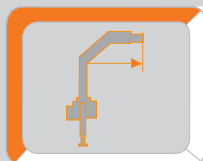


# ATLAS

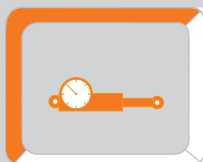
Krane / Cranes / Grues / Grúa



**max : 2450 kg**



**max : 10,96 m**

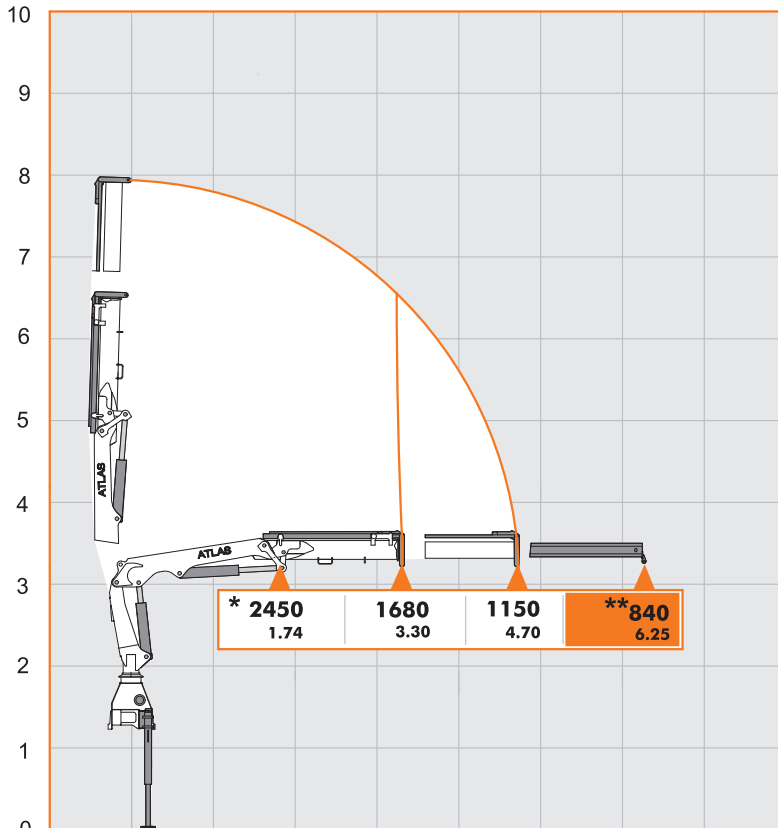


**max : 300 bar**

**AVAILABLE & COST EFFECTIVE**

# LASTKURVEN

Load Diagram-Courbes de charges-Curvas de cargas - Diagramma di portata



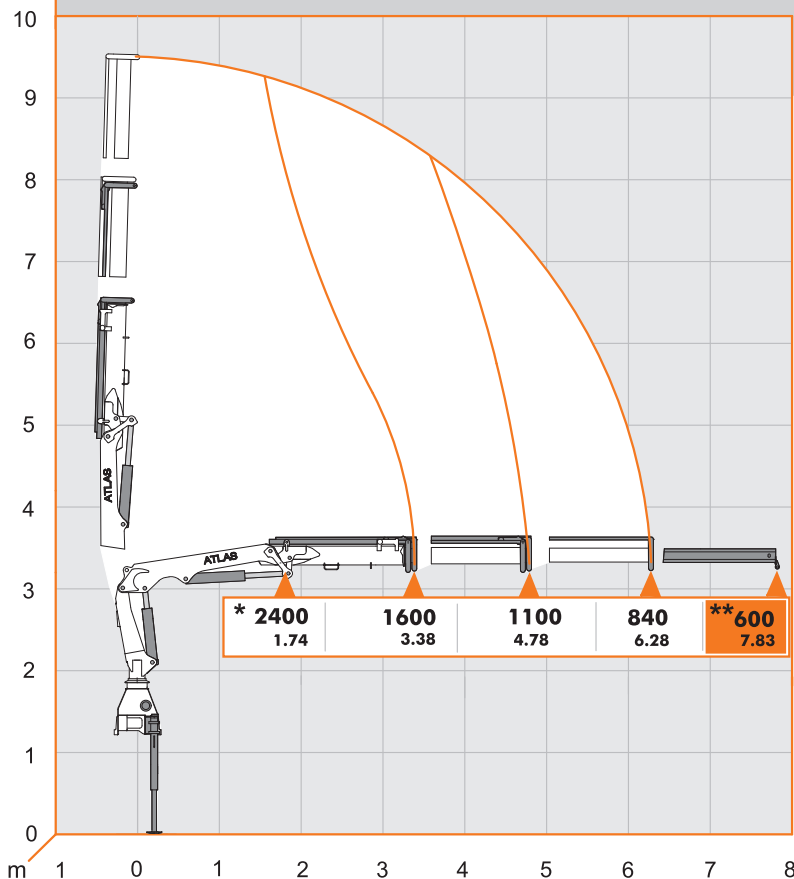
Hubarmstellung 10°/ boom position 10°/ Faites tonner la position à 10°/ Lance posición 10°

## AK 57.3 A1

**Kg** Traglast/lifting capacity/En soulevant la capacité /Levantando capacidad in "Kg"  
**m** Mass/measurement/des mesure/de medición in "m"

**\*\*** - Optional { manuelle Verlängerung  
 manuell extension  
 l'extension mécanique  
 extensiones manuales

**\*** - { zusätzlicher Lasthakenpunkt am Knickarm  
 additional load hook point at jib  
 supplémentaires point crochet à flèche  
 carga adicional punto de gancho en la horca

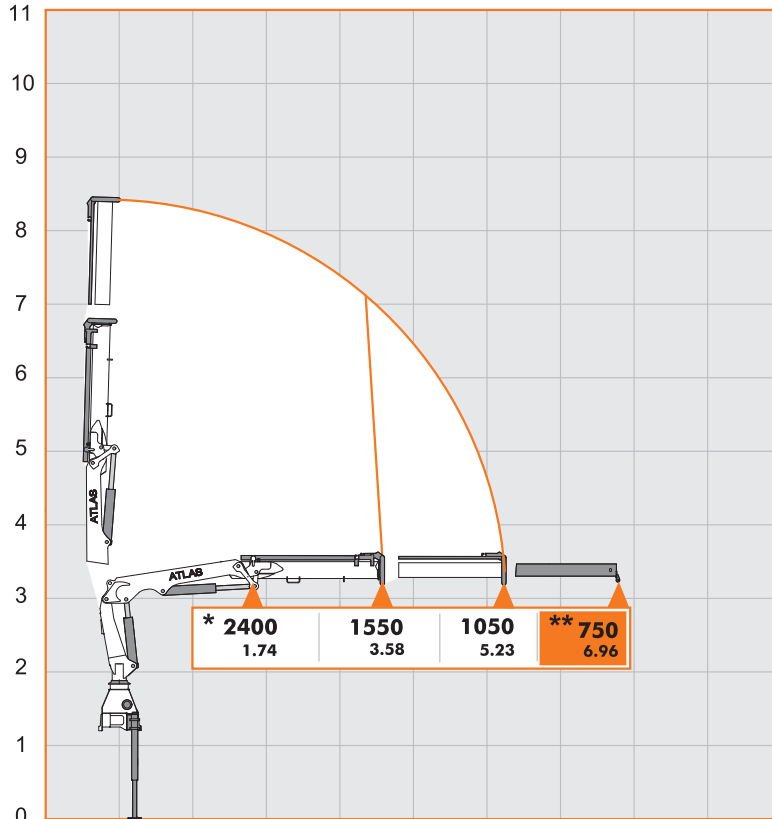


## AK 57.3 A2

**Kg** Traglast/lifting capacity/En soulevant la capacité /Levantando capacidad in "Kg"  
**m** Mass/measurement/des mesure/de medición in "m"

# LASTKURVEN

Load Diagram-Courbes de charges-Curvas de cargas - Diagramma di portata



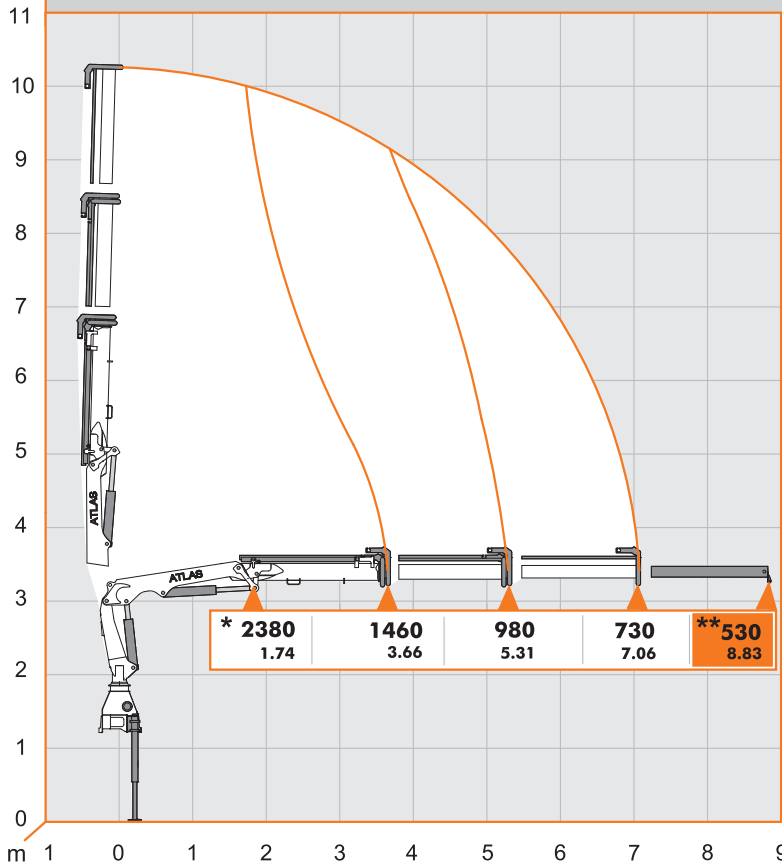
Hubarmstellung 10° / boom position 10° / Faites tonner la position à 10° / Lance posición 10°

## AK 57.3 A1L

**Kg** Traglast/lifting capacity/En soulevant la capacité /Levantando capacidad in"Kg"  
**m** Mass/measurement/des mesure/de medición in"m"

**\*\*** - Optional { manuelle Verlängerung  
manuell extension  
l'extension mécanique  
extensiones manuales

**\*** - { zusätzlicher Lasthakenpunkt am Knickarm  
additional load hook point at jib  
supplémentaires point crochet à fleche  
carga adicional punto de gancho en la horca

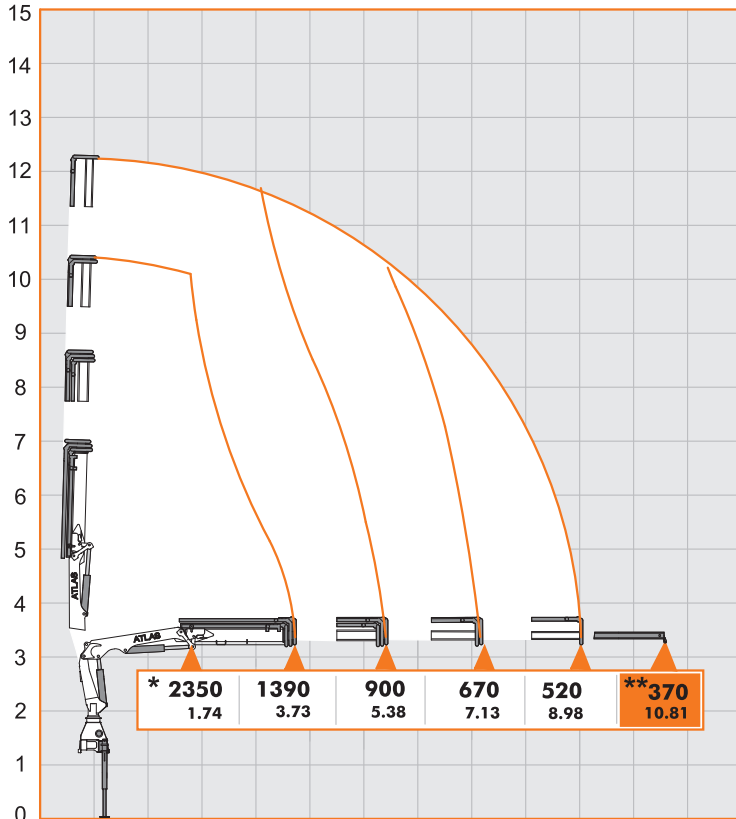


## AK 57.3 A2L

**Kg** Traglast/lifting capacity/En soulevant la capacité /Levantando capacidad in"Kg"  
**m** Mass/measurement/des mesure/de medición in"m"

# LASTKURVEN

Load Diagram-Courbes de charges-Curvas de cargas - Diagramma di portata



Hubarmstellung 10° / boom position 10° / Faites tonner la position à 10° / Lance posición 10°

## AK 57.3 A3L

**Kg** Traglast/lifting capacity/En soulevant la capacité /Levantando capacidad in"Kg"

**m** Mass/measurement/des mesure/de medición in"m"

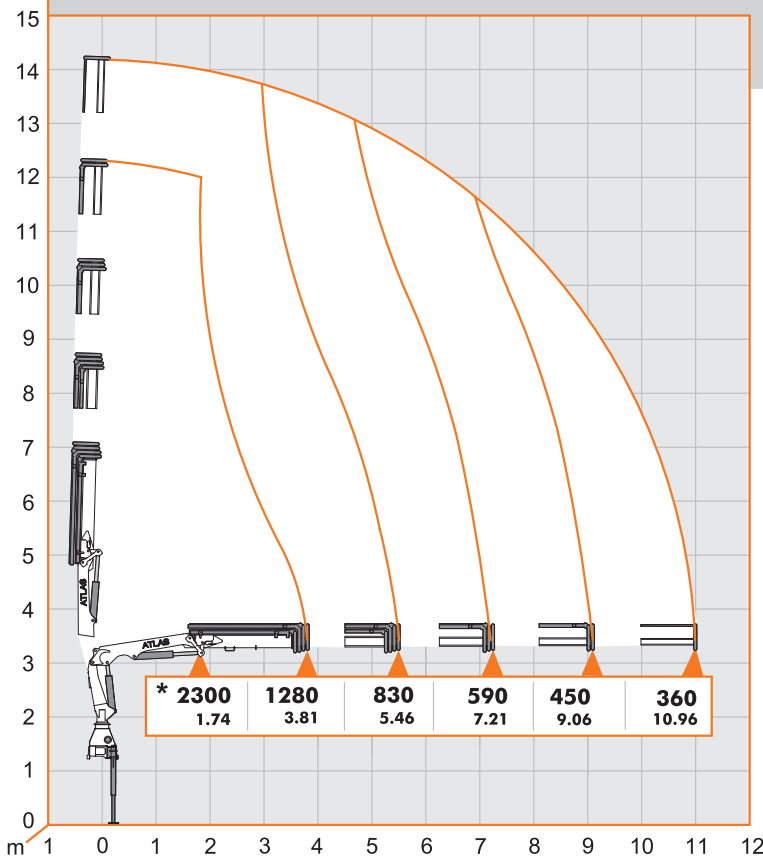
**\*\*** - Optional { manuelle Verlängerung  
manuell extension  
l'extension mécanique  
extensiones manuales

**\*** ----- { zusätzlicher Lasthakenpunkt am Knickarm  
additional load hook point at jib  
supplémentaires point crochet à fleche  
carga adicional punto de gancho en la horca

## AK 57.3 A4L

**Kg** Traglast/lifting capacity/En soulevant la capacité /Levantando capacidad in"Kg"

**m** Mass/measurement/des mesure/de medición in"m"

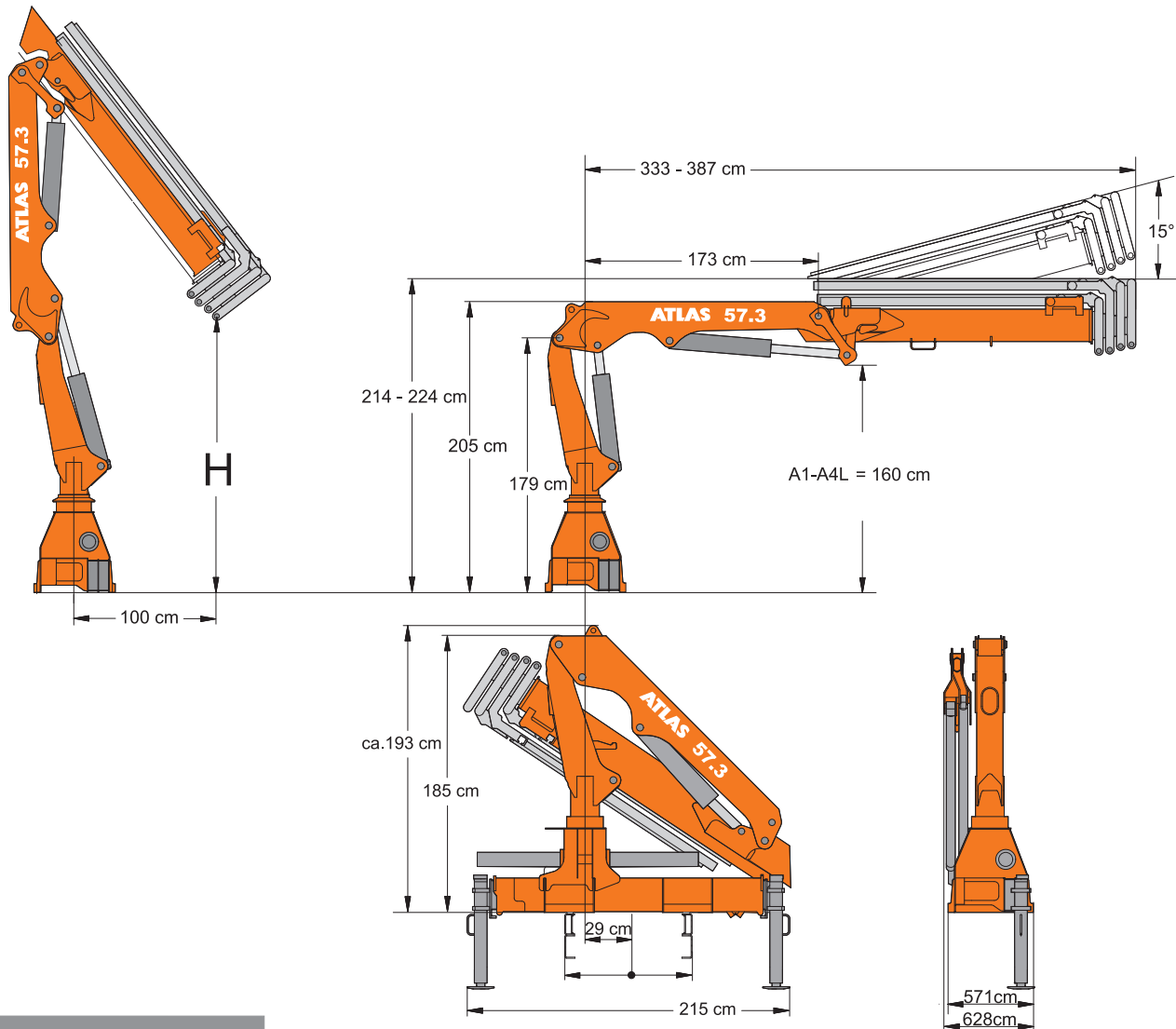




# ABMESSUNGEN

Dimensions - Dimensions - Dimensiones

## LADEKRAN AK 57.3



	AK 57.3		H1/B3				
	Gewicht Weight poids Peso	H	Betriebsdruck operating pressure pression de service Presión de servicio	Ölfördermenge oil supply amount débit d'huile Caudal de aceite	Schwenkbereich swivel range plage de pivotement Alcance de giro	Schwenkmoment swivel moment couple de pivotement Par de giro momento	Hubmoment moment of leverage Momento de elevación Momento di sollevamento
	Kg	m	bar	l/min		kNm	mt
A 1	763	2,66	300	25	390°	10,0	5,54
A 2	829	2,54	300	25	390°	10,0	5,41
A 1L	774	2,26	300	25	390°	10,0	5,54
A 2L	844	2,16	300	25	390°	10,0	5,34
A 3L	912	2,03	300	25	390°	10,0	5,23
A 4L	974	1,93	300	25	390°	10,0	5,14



→ einfaches Grundgerät im Lasthakenbereich /  
simple basic unit for loadhook work /  
type de base simple avec crochet /  
maquina base para trabajo con gancho

# WIRTSCHAFTLICH, FLEXIBEL, STARK

Economical, flexible, strong - économique, flexible, forte - economica, flexible, fuerte

## AUSSTATTUNG

Facilities - Equipements - Instalaciones



Seilwinde  
Cable winch  
Treur á Cábale  
Cabrestante



Hubarbeitskorb  
Man Basket  
Panier de Travail  
Hombre cesta



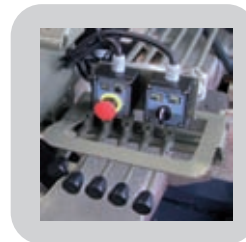
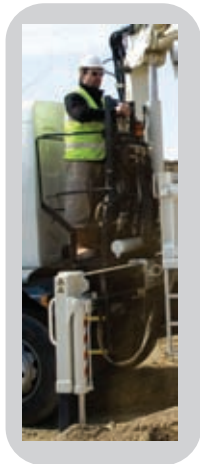
Z-Arm  
Jib-Boom  
Braz Z  
Brazo en Z

Zusatzabstützträger  
Additional outriggers  
D`autres stabilisateurs  
Adicional estabilizadores



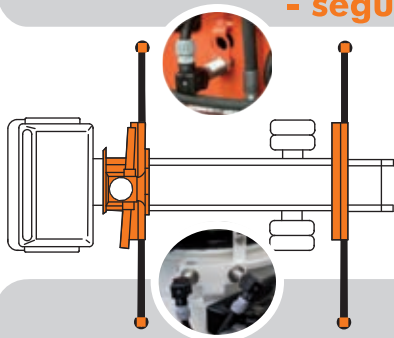
## STEUERUNG

Control - Contrôle - Control



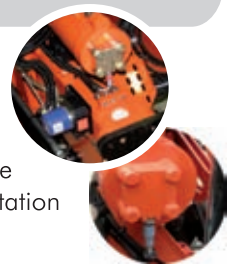
## ABSTÜTZÜBERWACHUNG

Monitoring of the stabilizing support - suivi de l'appui de stabilisation  
- seguimiento del apoyo estabilización



(EAW) nach EN 12999

elektr. Überwachung der Abstützweite und des Schwenkwinkels  
electr. monitoring of the stabilizing support wide and the slewing range  
contrôle électrique de l'écartement de stabilisatin et de l'angle de rotation  
control electrico de los estabilizadores y del angulo de rotación



## WERKZEUGE

Tools - Outils - Herramientas



Steinstapelzange  
Brick Stack Grapples  
Pincas á Parpaings  
Pinza



Greifer  
Grabber  
Grappin  
el garfio



Krangabel  
Pallet Fork  
Fourches  
Paleta Tenedor



# ATLAS



**sicher**

save, sécurité, seguro

**flexibel**

flexible, flexible, flexible

**innovativ**

innovativ, innovante, innovadora

**effizient**

efficient, efficace, eficiente

**kraftvoll**

powerful, puissant, poderoso

**Atlas Maschinen GmbH**

**erreichbar**

available, joignable, alcanzado



Stedinger Straße 324  
D-27751 Delmenhorst  
Tel. +49 (0) 4221-491 - 0  
Fax +49 (0) 4221-491-443  
info@atlasgmbh.com

**[www.atlasgmbh.com](http://www.atlasgmbh.com)**

YOUR CONTACT INFORMATION