

Model 3706 PS TELEHANDLER



Performance

Rated capacity	3700 kg	
Maximum lift height	6.1 m	
Capacity at max height	2500 kg	
Capacity at maxreach	1500 kg	
Lift speed (boom retracted)		
Up	5.0 sec	
Down	4.0 sec	
Boom speed (extended/retracted)		
Extended	4.5 sec	
Retracted	5.0 sec	
Top travel speed (standard engine)	32 km/h	
	Standard:	Optional:
Engine:	74.4kW 4 speed	90kW 6 speed
Drawbar pull (loaded)	69.3kN	88.65kN
Outside turning radius (over tyres)	3.70 m	
Operating weight (no attachment)	8200 kg	

Standard Specifications

Engine

Make and model	Deutz TCD 3.6 L4
No. of cylinders	4
Displacement	3.6 L
Standard engine gross power	74.4kW
Maximum torque at 1600 RPM	420Nm
Optional engine gross power	90.0kW
Maximum torque at 1600 RPM	480Nm
Fuel tank capacity	150 L

Transmission

- 4 Speed forward - 3 reverse powershift transmission
- 6 Speed forward - 3 reverse powershift transmission (optional)
- 4-wheel drive

Axles

- Front axle rigid mounted planetary steer axle
- Limited slip differential on front axle
- Rear axle trunnion mounted planetary steer axle

Brakes

- Service brakes are inboard wet disc brakes on front axle
- Parking brake external disc and calliper on input shaft of front axle

Tyres

- Standard Mitas 15.5/80-24 16ply
- Optional (more available) Pneumatic Michelin 440/80R24 power CL

Cab

- EROPS and FOPS fully glazed all weather cab
- 2 way adjustable mechanical suspension seat

Steering 4-Wheel

- Power steering with steering wheel spinner
- Two wheel/four wheel/crab steer with rear wheel assisted alignment

Instruments

- Engine glow start assist
- Fuel gauge
- Hour- and tachometer
- CE marking
- Telescope function reconfiguration
- Battery isolator switch
- Bucket mode switch

Hydraulic System-Implement

Capacity	90 L
----------	------

- 63cc variable displacement load sensing piston pump
- Maximum pump flow 150 L/min.
- Auxiliary hydraulic flow - intermittent 80 L/min.

Accessories & Options

- Rear hydraulic pick up hitch
- Hydraulic trailer braking
- Rotating Beacon
- Air conditioning
- Wide range of hitches, couplers, carriages and tyres
- Work Lights
- Boom Suspension
- Road Lights

Attachments

Standard:	
Standard carriage	4000 kg
Standard coupler	Mechanical quick switch coupler

Optional:	
Side shift carriage	1200 mm
Fork positioning carriage	1225 mm
Side shift pallet forks	1200 mm x 50 mm x 100 mm
Pallet fork (4000 kg)	1200 mm x 60 mm x 100 mm

Hitches	Rear hydraulic pick up hitch
Couplers	Hydraulic quick switch coupler JLG, JCB, Manitou Manual coupler JLG, JCB, Manitou

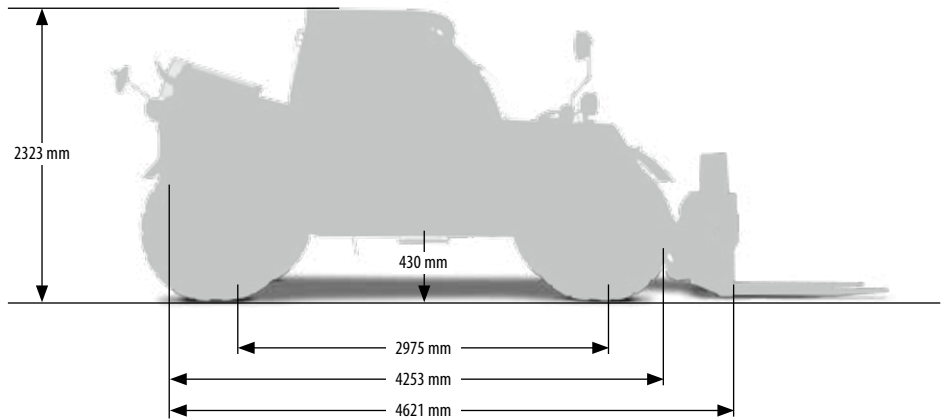
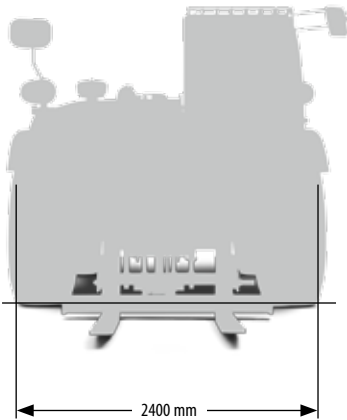
Concrete mixer bucket	500 L capacity, 1100 kg
Multi-Purpose bucket with grab	2.4 m, 1.0 m ³
4-1 Bucket	2.4 m, 1.0 m ³
Digging buckets	2.4 m, 0.8 m ³ 2.4 m, 1.0 m ³

Lifting Hook	3700 kg
Truss Boom	3.4 m, 1000 kg 3.6 m, 650 kg

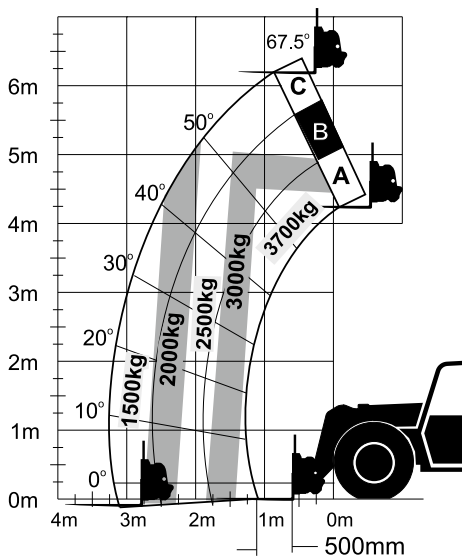
Model 3706 PS TELEHANDLER

Dimensions

All dimensions are approximate.



Load Chart and Dimensions



IMPORTANT

Rated lift capacities shown are with machine equipped with carriage and pallet forks. The machine must be level on a firm surface with undamaged, properly inflated tyres. Machine specifications and stability are based on rated lift capacities at specific boom angles and boom lengths. (If specifications are critical, the proposed application should be discussed with your dealer.) DO NOT exceed rated lift capacity loads, as unstable and dangerous machine conditions will result. DO NOT tip the machine forward to determine the allowable load.

Use only JLG approved attachments with proper material handler model/attachment load capacity charts displayed in the operator's cab.

Due to continuous product improvements, JLG Industries reserves the right to make specification and/or equipment changes without prior notification.



JLG Industries, Inc.

Polaris Avenue 63
2132 JH Hoofddorp
The Netherlands
Tel: +31 (0)23 565 5665
Fax: +31 (0)23 557 3750
www.jlgeurope.com

An Oshkosh Corporation Company