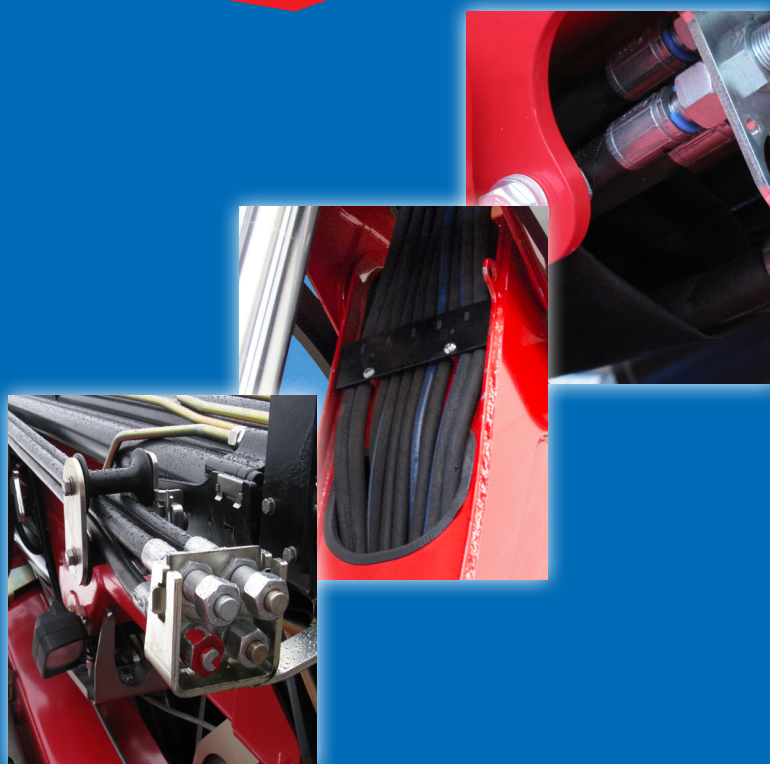


3020K-MCS



- power to lift



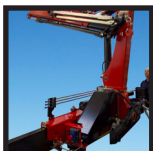


Loading group HC1/HD4/B3		3020-K2	3020-K3	3020-K4	3020-K5
Type				K-MCS	
TECHNICAL DATA					
Load moment	tm	28.9	28.0	27.6	26.8
Hydraulic reach	m	8.3	10.3	12.4	14.6
Slewing torque	kgm		3800		
Slewing angle	°		420		
Working pressure	bar		345		
Weight excl. stabilizer legs	kg	2590	2790	2990	3160
Weight of stabilizer legs, standard	kg		315		
Pump performance, fixed flow pump	l/min		80		
Oil tank capacity, separate tank	l		160		
Power consumption	kW		46		
GEOMETRY					
Height above mounting surface	mm	2350			
Width, folded	mm		2500		
Length of crane, no extra valves	mm	1024	1024	1024	1024
Length with 2 extra valves in internal hose reel	mm	1024	1024	1024	1024
Length with 2 extra valves in hose guides	mm	1147	1147	1147	1147
Hook height 1.5 m from column	m	2.5	2.5	2.4	2.4
Dual Power Plus link arm system				Basic	
Over-bending on crane	°			15	
CONTROL MODE					
Manual operation of crane (JS)				Basic	
Manual operation of stabilizer functions				Basic	
Dual control of crane and stabilizer functions				Basic	
CONTROLS					
RCL 5300 Safety System				Basic	
Control valve type (-h) for crane operation				Basic	
Control valve type (-h) for operation of stabilizer legs and beams				Basic	
Electro-hydraulic speed adaptation system HDL-h				Basic	
OPTIONS: HYDRAULIC EQUIPMENT					
Oil cooler				Option	
High-pressure filter				Basic	
Hydraulically extensible stabilizer beam				Basic	
Fixed stabilizer leg				Basic	
Swing-up stabilizer leg, 20°				Option	
Swing-up stabilizer leg 180° with gas spring				Option	
Hydraulic swing-up stabilizer leg, 180°				Option	
2 extra valves in hose guides				Option	
2 extra valves in hose reels internally in the jib extensions				Option	
160 l oil tank mounted on the crane				Option	
OTHER EQUIPMENT					
Work light on crane				Option	



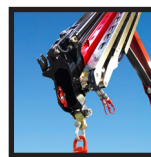
HMF RCL 5300

The safety system monitors the load moment of the crane as well as the vehicle stability and thereby, the safety of the crane operator.



Efficient Dual Control

The crane is equipped with dual control of both the crane control valve and the stabilizer control valve.



Extra Valves, Guides

2 extra valves are fed in sturdy hose guides alongside the jib extension system.



Dual Link Arm System

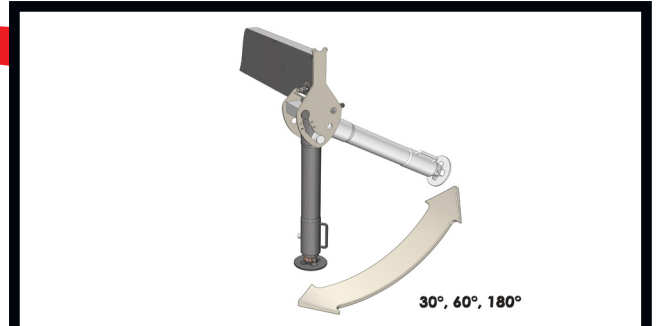
The HMF dual Power Plus link arm system has an excellent lifting capacity at long reach and in high positions. The dual Power Plus link arms also make it possible to lift heavy loads close to the column.



MCS - Manual Control - extra Capacity

(Manual Control Superior)

The crane is equipped with a manually operated control valve and HDL function that provide precise and simple control of the crane functions. The RCL 5300 TCL Safety System will only limit the load moment increasing movements if the crane reaches 100% capacity - all other functions remain fully operational.



Adaptable Stabilizer Solutions

The stabilizer legs of the crane are to ensure stability - however they still have to be easy to handle and must not take up too much space when not in use. Therefore you can choose between fixed stabilizer legs, manual swing-up stabilizer legs to 30/60°, manual swing-up stabilizer legs to 180° with gas spring or hydraulic swing-up stabilizer legs to 180°. The stabilizer beam is hydraulically extensible.



Slewing Area 420°

The crane has a slewing area of 420° with the turntable and slewing gear providing a slewing torque of 3800 kg. The slewing system is equipped with an electronic braking system, RSR-E, which reduces the slewing speed before the crane reaches the maximum slewing angle.



Immaculate Finish - Year after Year

HMF does not compromise on the surface treatment. This is made possible thanks to HMF's ZetaCoat pre-treatment followed by EQC powder coating, ensuring that corrosion never takes over. We guarantee that you obtain the best imaginable paint quality - a quality that never fades and that can withstand damage. A crane that is intensively used must be able to withstand the hardest wear.

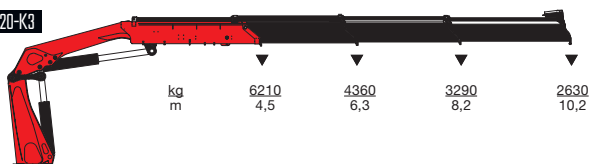


- power to lift

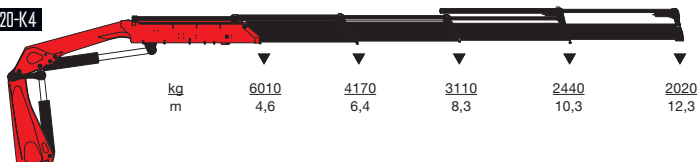
HMF 3020-K2



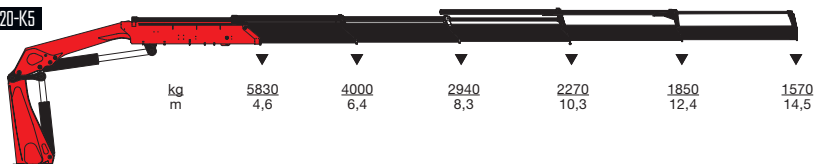
HMF 3020-K3



HMF 3020-K4



HMF 3020-K5



▼ Lifting capacity without manual extensions
 ▽ Lifting capacity with manual extensions



- power to lift
HMF Group A/S

Oddervej 200 · DK-8270 Højbjerg
 Tel.: +45 8627 0800 · Fax: +45 8627 0744 · info@hmf.dk

www.hmf.dk

Z008875-04

We reserve the right to introduce improvements and modifications