

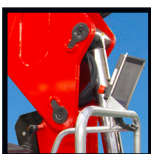
2530-L



- power to lift



LOADING GROUP HC1/HD5/B3		2530-L2	2530-L3	2530-L4	2530-L5
Type					LX+
TECHNICAL DATA					
Load moment	tm	23.6	22.9	22.3	21.8
Hydraulic reach	m	9.4	11.5	13.4	15.4
Slewing torque	kgm		2710		
Slewing angle	°		450		
Working pressure	bar		345		
Weight excl. stabilizer legs	kg	1925	2080	2235	2375
Weight of stabilizer legs, standard	kg		290		
Pump performance	l/min		70 - 120		
Oil tank capacity, separate tank	l		140-200		
Power consumption	kW		40-69		
GEOMETRY					
Height above mounting surface, horizontal boom	mm		2600		
Height below mounting surface, horizontal boom	mm		1900		
Length of crane	mm		815		
Long main boom					Basic
Single Power Plus link arm System					Basic
Over-bending on crane	°		15		
Hook height 1 m from column	m	3.9	3.8	3.7	3.6
CONTROL MODE					
Radio remote control of crane					Basic
Manual operation of stabilizer functions					Basic
Remote control box with HMF InfoCentre					Option
Remote control box, linear control levers (L) or joysticks (J)					L / J
Radio remote control of stabilizer functions					Option
Top seat on column with bracket for remote control box					Option
CONTROLS					
RCL 5300 Safety System					Basic
Proportional control valve type (-d) for radio remote control					Basic
Control valve type (-h) for operation of stabilizer legs and beams					Basic
Electronic speed adaptation system HDL-d					Basic
OPTIONS: HYDRAULIC EQUIPMENT					
Prepared for variable flow pump					Basic
High-pressure filter					Basic
Oil cooler					Option
Oil tank fitted on crane					-
180° hydraulic swing-up stabilizer leg					Option
2 extra valves in hose guides		Option	Option	Option	Option
2 extra valves in hose reels internally in the jib extensions		Option	Option	-	-
4 available functions for separate traverse					Option
Biodegradable oil					Option
OTHER EQUIPMENT					
Ladder to top seat					Option
EVS stability safety system					Option
Work light on crane					Option
Shielding of piston rod, jib cylinder					Option
STF alarm flash on stabilizer legs					Option
Manual swing-up stabilizer leg with gas spring, 180°					Option
Prepared for fixed flow pump					Option



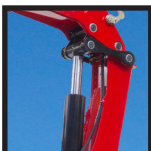
Single Link Arm System

HMF single Power Plus link arm system has a smooth and excellent lifting capacity at long reach.



Central Lubrication

The base is equipped with a central greasing point for easy access to maintenance.



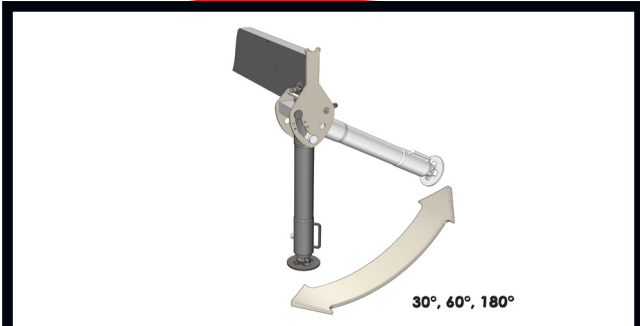
HDL-d Speed Adaptation System

HDL-d ensures that the crane automatically adapts the speed to the current RCL impacts or EVS angles.



HMF RCL 5300

The safety system monitors the load moment of the crane as well as the vehicle stability and thereby, the safety of the crane operator.



Adaptable Stabilizer Solutions

The stabilizer legs of the crane are to ensure stability - however they still have to be easy to handle and must not take up too much space when not in use. Therefore you can choose between fixed stabilizer legs, manual swing-up stabilizer legs to 180° with gas spring or fully hydraulic swing-up stabilizer legs to 180°. Stabilizer beams can be freely selected as hydraulically extensible or manually extensible, also in connection with the sophisticated EVS stability monitoring.



EVS - active Securing of Stability

HMF's patent pending stability safety system, EVS, is continuously taking into account the current load on the vehicle so that crane and truck are in perfect balance. As the system includes the load on the truck body as a part of the tare weight of the vehicle, it means that you actually obtain a considerably larger working area with a load on the truck body - thanks to EVS.



Top Seat with Radio Remote Control TS-RC

By means of the remote control box the operator can control the crane sitting on the top seat. The operator has an excellent visibility of the working area from the seat. It is an ergonomically convenient and very safe position for the crane operator. TS-RC is ideal for long-period loading and unloading tasks or in case of tasks that require a particularly good visibility of the working area.



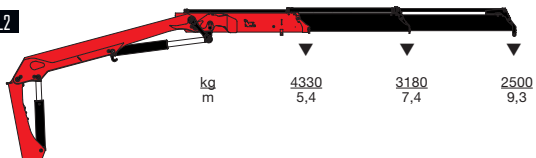
Radio Remote Control type RC-h

HMF radio remote control provides the operator with all advantages and possibilities for remote control of the crane functions and important safety functions in the HMF RCL Safety System. The crane operator can move in the entire working area and can at any time position himself optimally and safely in relation to the lifting task. Thanks to the remote control box it is possible to carry out many tasks besides operating the crane, independent of a fixed control position.

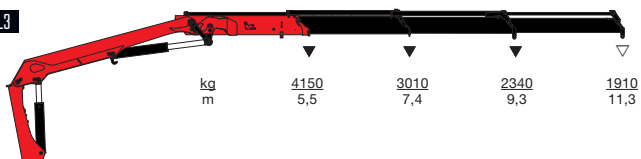


- power to lift

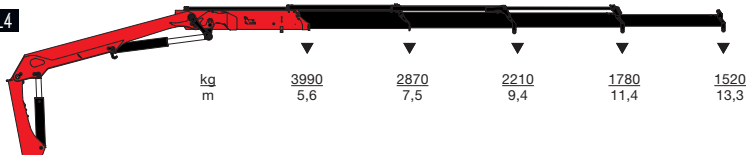
HMF 2530-L2



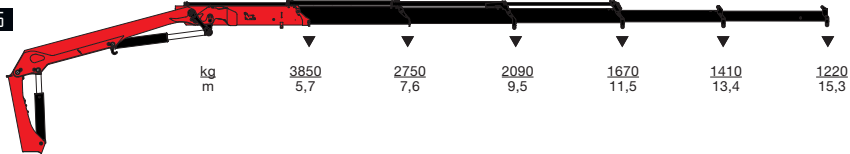
HMF 2530-L3



HMF 2530-L4



HMF 2530-L5



▼ Lifting capacity without manual extensions
 ▽ Lifting capacity with manual extensions



- power to lift
HMF Group A/S

Oddervej 200 · DK-8270 Højbjerg
Tel.: +45 8627 0800 · Fax: +45 8627 0744 · info@hmf.dk

www.hmf.dk

Z008799-02

We reserve the right to introduce improvements and modifications