

2020K-RC



- power to lift

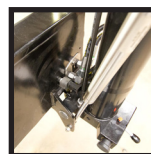


LOADING GROUP HC1/HD4/B3		2020-K2	2020-K3	2020-K4	2020-K5	2020-K6
Type				K-RC		
TECHNICAL DATA						
Load moment	tm	18.4	18.0	17.5	17.1	16.6
Hydraulic reach	m	8.3	10.3	12.5	14.8	17.2
Slewing torque	kgm			2426		
Slewing angle	°			400		
Working pressure	bar			330		
Weight excl. stabilizer legs	kg	1840	1995	2180	2320	2445
Weight of stabilizer legs, standard	kg			275		
Pump performance	l/min			55-70		
Oil tank capacity, separate tank	l			90		
Power consumption	kW			30-38		
GEOMETRY						
Height above mounting surface	mm			2295		
Width, folded	mm			2500		
Length of crane, no extra valves	mm	885	885	885	885	885
Length with 2 extra valves in internal hose reel	m	885	885	885	885	885
Dual Power Plus link arm system				Basic		
Over-bending on crane	°			15		
Hook height 1 m from column	m	2.7	2.7	2.6	2.5	2.4
CONTROL MODE						
Radio remote control of crane				Basic		
Manual operation of stabilizer functions				Basic		
Remote control box with HMF InfoCentre				Option		
Remote control box, linear control levers (L) or joysticks (J)				L / J		
Stand-up controls with bracket for radio remote control box				Option		
Top seat on column with bracket for remote control box				Option		
CONTROLS						
RCL 5300 Safety System				Basic		
Control valve type (RC) for crane operation				Basic		
Control valve type (-h) for operation of stabilizer legs and beams				Basic		
HDL speed adaptation system				Basic		
OPTIONS: HYDRAULIC EQUIPMENT						
Oil cooler				Option		
High-pressure filter				Option		
Hydraulically extensible stabilizer beam				Option		
Multi-coupling for extra valves in hose guides				Option		
Extra valves in hose guides				Option		
Extra valves in hose reels internally in the jib extensions				Option		
2 or 4 available functions for operating the separate traverse				Option		
1500 kg or 2500 kg hydraulic hoist on the crane				Option		
90 l oil tank mounted on the crane				Option		
OTHER EQUIPMENT						
Number of manual extensions		-	-	3	3	3
Fixed or variable flow pump				Option		
Work light on crane				Option		
Stabilizer leg, 30°/60° manual swing-up, type R, 0.8-1.3 m				Option		
Manual swing-up stabilizer leg with gas spring				Option		
Biodegradable oil				Option		
Footplate extended 100 mm or 200 mm				Option		



Corrosion and Wear and Tear

All painted surfaces are coated with EQC surface treatment, and all hydraulic pipes are finished with Zistaplex coating.



180° Swing-Up Stabilizer Leg

Swing-up stabilizer leg to 180° with or without radio remote control.



HMF InfoCentre

The HMF InfoCentre continuously informs the operator about the current load moment and condition of the crane.



Dual Link Arm System

The HMF dual Power Plus link arm system has an excellent lifting capacity at long reach and in high positions as well as it makes it possible to lift a heavy load close to the column.



Immaculate Finish - Year after Year

HMF does not compromise on the surface treatment. This is made possible thanks to HMF's ZetaCoat pre-treatment followed by EQC powder coating, ensuring that corrosion never takes over. We guarantee that you obtain the best imaginable paint quality - a quality that never fades and that can withstand damage.



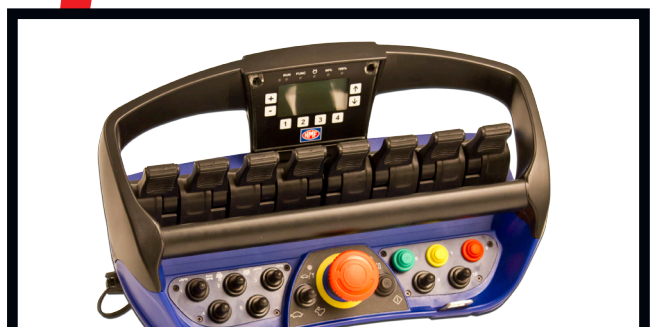
Extra Valves with Variation

A well-known and usual hose routing to the end of the extensions means that 1 or 2 extra valves are fed in sturdy hose guides alongside the jib extension system. If further efficient protection of the hoses is required, 1 or 2 extra valves can be fed in internal hose reels and lie particularly well protected. In case of more than 6 hydraulic extensions or a reach of approx. 17 m, 1 or 2 extra valves will be fed in external, smooth-running and efficient hose reels.



EVS - active Securing of Stability

HMF's patent pending stability safety system, EVS, is continuously taking into account the current load on the vehicle so that crane and truck are in perfect balance. As the system includes the load on the truck body as a part of the tare weight of the vehicle, it means that you actually obtain a considerably larger working area with a load on the truck body - thanks to EVS.



HMF Radio Remote Control type RC

(Remote Control)

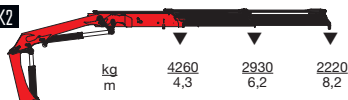
HMF radio remote control provides the operator with all advantages and possibilities for remote control of the crane functions and important safety functions. The crane operator can move in the entire working area and can at any time position himself optimally and safely in relation to the lifting task. The crane is equipped with the HDL system which automatically adapts the crane speed to the working situation when it is exposed to a lot of stress.



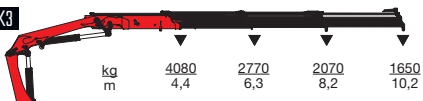
- power to lift

HMF 2020K-RC

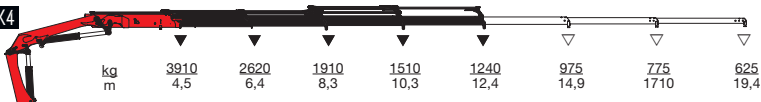
HMF 2020-K2



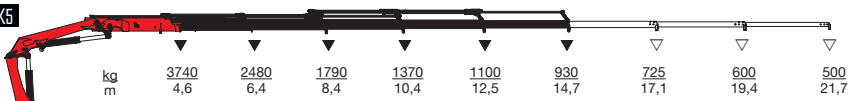
HMF 2020-K3



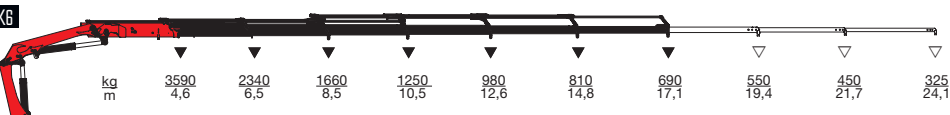
HMF 2020-K4



HMF 2020-K5



HMF 2020-K6



▼ Lifting capacity without manual extensions
 ▽ Lifting capacity with manual extensions



- power to lift
HMF Group A/S

Oddervej 200 · DK-8270 Højbjerg
 Tel.: +45 8627 0800 · Fax: +45 8627 0744 · info@hmf.dk

www.hmf.dk

Z008890-01

We reserve the right to introduce improvements and modifications