

1830-K

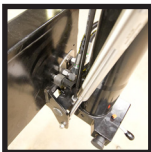


- power to lift



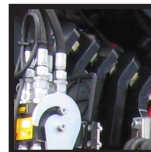


LOADING GROUP HC1/HD5/B3		1830-K1	1830-K2	1830-K3	1830-K4	1830-K5	1830-K6
Type					KX+		
TECHNICAL DATA							
Load moment	tm	17.0	16.5	16.1	15.7	15.3	15.0
Hydraulic reach	m	6.2	8.3	10.4	12.7	14.9	17.2
Slewing torque	kgm	1794					
Slewing angle	°	400					
Working pressure	bar	345					
Weight excl. stabilizers	kg	1420	1560	1700	1835	1955	2050
Weight of stabilizers, standard	kg	200					
Pump performance	l/min	70-100					
Oil tank capacity, separate tank	l	90					
Power consumption	kW	40-58					
GEOMETRY							
Height above mounting surface	mm	2250					
Width, folded	mm	2500					
Length of crane, no extra valves	mm	820					
Length with 2 extra valves in internal hose reel	mm	820					
Single Power Plus link arm system		Basic					
Over-bending on crane	°	15					
Hook height 1 m from column	m	2.76	2.71	2.62	2.53	2.44	2.35
CONTROL MODE							
Radio remote control of crane		Basic					
Manual operation of stabilizer functions		Basic					
Remote control box with HMF InfoCentre		Option					
Remote control box, linear control levers (L) or joysticks (J)		L / J					
Stand-up controls with bracket for radio remote control box		Option					
Top seat on column with bracket for remote control box		Option					
CONTROLS							
RCL 5300 Safety System		Basic					
Proportional control valve type (-d) for radio remote control		Basic					
Dual control of stabilizer functions (crane)		Basic					
Electronic speed adaptation system HDL-d		Basic					
OPTIONS: HYDRAULIC EQUIPMENT							
Oil cooler		Option					
Hydraulic winch 1500 kg		Option					
Hydraulic winch 2500 kg		Option					
Radio remote controlled stabilizer functions		Option					
Extra valves in hose guides		Option					
Extra valves in hose reels internally in the jib extensions		Option					
3 rd extra valve with electric reverser		Option					
90 l oil tank mounted on the crane		Option					
2 available functions (manual stabilizer beam)		Option					
4 available functions (hydraulic stabilizer beam)		Option					
Radio remote controlled stabilizer functions		Option					
OTHER EQUIPMENT		1830-K1	1830-K2	1830-K3	1830-K4	1830-K5	1830-K6
Number of manual extensions				3	3	3	2
Work light on crane		Option					
Temperature monitoring		Option					
Available radio remote controlled valve section fitted on the base		Option					
Shielding of jib cylinder		Option					



180° swing-up stabilizer leg

Swing-up stabilizer leg to 180° with or without radio remote control.



Multi-coupling

A multi-coupling makes it easy and simple to mount and dismount hydraulic accessories.



Single link arm system

The HMF single Power Plus link arm system has an excellent lifting capacity at long reach and works particularly fast when loading and unloading with grab.



Minimum space requirements

Minimum space requirements for the large crane range give you more space on the truck body - and better economy.



HMF radio remote control

The HMF radio remote control is part of a unique operation and safety system (TCC - Total Crane Control), which provides the operator with all advantages and possibilities for operating the crane functions and important safety functions on the HMF RCL Safety System. By means of the remote control box you can carry out many tasks besides operating the crane, independent of a fixed control position.



Extra valves with variation

A well-known and usual hose routing to the end of the extensions means that 1 or 2 extra valves are fed in sturdy hose guides alongside the jib extension system. If further efficient protection of the hoses is required, 1 or 2 extra valves can be fed in internal hose reels and lie particularly well protected. In case of more than 6 hydraulic extensions or a reach of approx. 17 m, 1 or 2 extra valves will be fed in external, smooth-running and efficient hose reels.



EVS - active securing of stability

HMF's patent pending stability safety system, EVS, is continuously taking into account the current load on the vehicle so that crane and truck are in perfect balance. As the system includes the load on the truck body as a part of the tare weight of the vehicle, it means that you actually obtain a considerably larger working area with a load on the truck body - thanks to EVS.



Adaptable stabilizer solutions

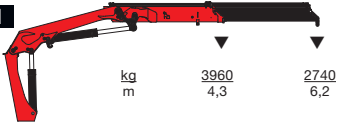
The stabilizer legs of the crane are to ensure stability - however they still have to be sturdy, easy to handle and must not take up too much space when not in use. Therefore you can choose between fixed stabilizer legs, manual swing-up stabilizer legs to 180° with gas spring or fully hydraulic swing-up stabilizer legs to 180°. Stabilizer beams can be freely selected as hydraulically extensible or manually extensible, also in connection with the sophisticated EVS stability monitoring.



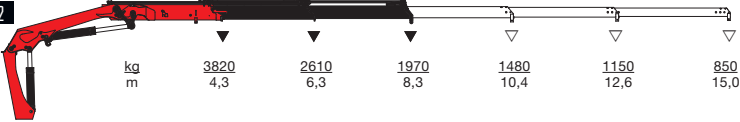
- power to lift



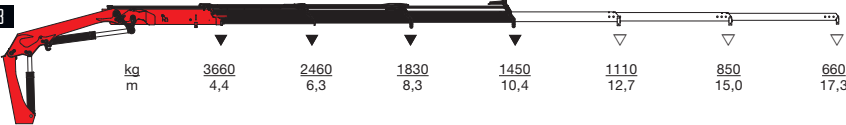
HMF 1830-K1



HMF 1830-K2



HMF 1830-K3



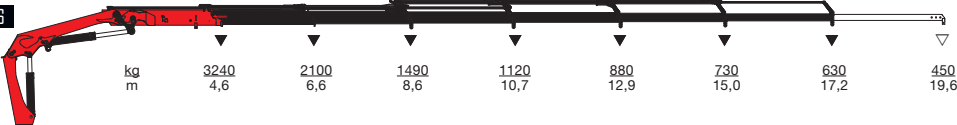
HMF 1830-K4



HMF 1830-K5



HMF 1830-K6



▼ Lifting capacity without manual extensions
 ▽ Lifting capacity with manual extensions



- power to lift
HMF Group A/S

Oddervej 200 · DK-8270 Højbjerg
 Tel.: +45 8627 0800 · Fax: +45 8627 0744 · info@hmf.dk

www.hmf.dk

Z008729-02

We reserve the right to introduce improvements and modifications