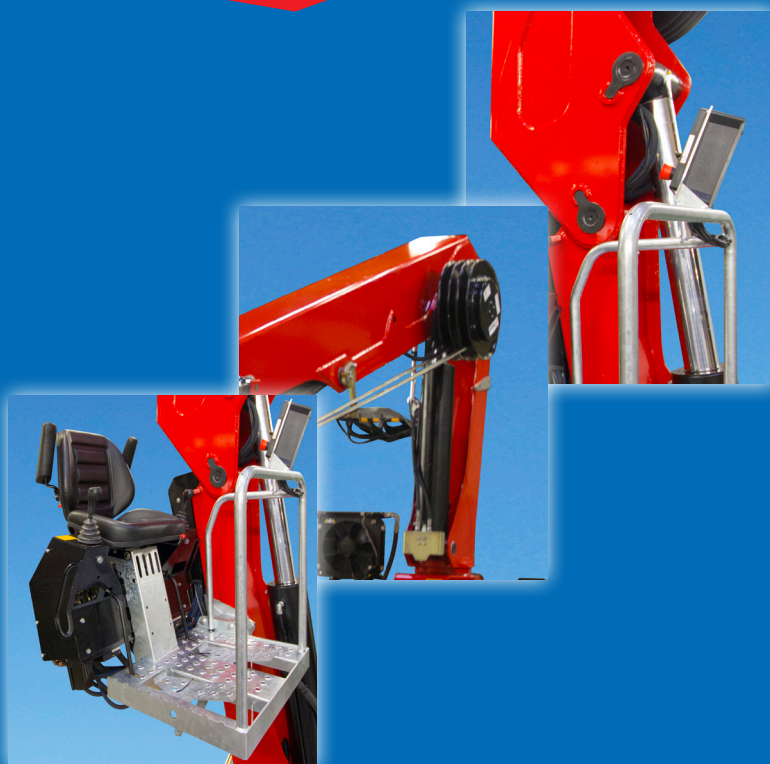


# 1710-L



- power to lift



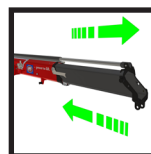


LOADING GROUP HC1/B3		1710-L2	1710-L3	1710-L4	1710-L5
Type				L-TS	
<b>TECHNICAL DATA</b>					
Load moment	tm	15.8	15.0	14.5	14.0
Hydraulic reach	m	9.4	11.5	13.4	15.4
Slewing torque	kgm		2380		
Slewing angle	°		450		
Working pressure	bar		300		
Weight excl. stabilizer legs	kg	1870	2025	2180	2320
Weight of stabilizer legs, standard	kg		275		
Pump performance	l/min		60		
Oil tank capacity, separate tank	l		160		
Power consumption	kW		30		
<b>GOMETRY</b>					
Height above mounting surface, horizontal boom	mm		2565		
Height below mounting surface, horizontal boom	mm		1865		
Length of crane	mm		805		
Long main boom			Basic		
Single Power Plus link arm System			Basic		
Over-bending on crane	°		15		
Hook height 1 m from column	m	3.9	3.8	3.7	3.6
<b>CONTROL MODE</b>					
Manual operation of crane from top seat				Basic	
Operation of crane functions via joysticks and foot levers				Basic	
Left hand: "Slew" and "Jib". Left foot: "Grab"				Basic	
Right hand: "Rotator" and "Boom". Right foot: "Extension"				Basic	
Manual operation of stabilizer legs "up/down" from top seat				Basic	
Manual operation of stabilizer beams "retract/extend" from top seat				Option	
<b>CONTROLS</b>					
RCL 5300 Safety System				Basic	
Control valve type (-d) for crane operation, single circuit				Basic	
Control valve type (-h) for operation of stabilizer legs and beams				Basic	
Full working speed in the entire working area				Basic	
<b>OPTIONS: HYDRAULIC EQUIPMENT</b>					
Prepared for variable flow pump				Basic	
High-pressure filter				Basic	
Oil cooler				Option	
Oil tank fitted on crane				-	
180° hydraulic swing-up stabilizer leg				Option	
2 extra valves in hose guides		Option	Option	Option	Option
2 extra valves in hose reels internally in the jib extensions		Option	Option	-	-
4 available functions for separate traverse				Option	
Biodegradable oil				Option	
<b>OTHER EQUIPMENT</b>					
Ladder to top seat				Option	
EVS stability monitoring system for manually operated cranes				Option	
Work light on crane				Option	
Shielding of piston rod, jib cylinder				Option	
STF alarm flash on stabilizer legs				Option	
ECT 5320 remote control of all functions of the RCL box				Basic	
Manual swing-up stabilizer leg with gas spring				Option	



### Central Lubrication

The base is equipped with a central greasing point for easy access to maintenance.



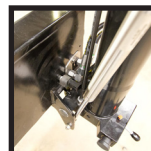
### Oil Regeneration System

A particular hydraulic valve on the hydraulic extensions of the crane optimises the speed of the extension system.



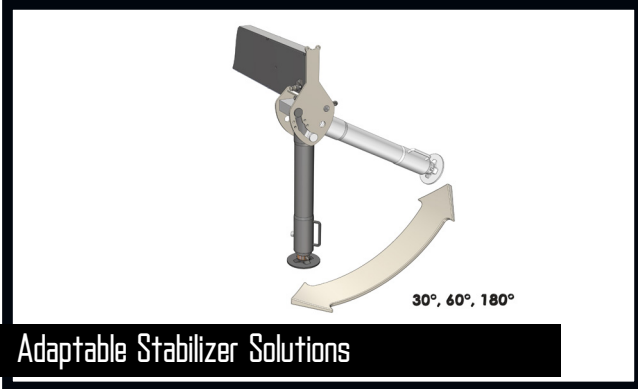
### Single Link Arm System

HMF single Power Plus link arm system has a smooth and excellent lifting capacity at long reach.



### 180° Swing-Up Stabilizer Leg

Swing-up stabilizer leg to 180° - manual with gas spring or hydraulically operated.



### Adaptable Stabilizer Solutions

The stabilizer legs of the crane are to ensure stability - however they still have to be easy to handle and must not take up too much space when not in use. Therefore you can choose between fixed stabilizer legs, manual swing-up stabilizer legs to 180° with gas spring or fully hydraulic swing-up stabilizer legs to 180°. Stabilizer beams can be freely selected as hydraulically extensible or manually extensible, also in connection with the sophisticated EVS stability monitoring.



### The HMF RCL 5300 Safety System

Continuous and clear information about i.e. the load moment and functional condition of the crane via a big and clear display on either the RCL 5300 box of the crane or on the HMF InfoCentre of the radio remote control box. The operator has an unobstructed view and access to information everywhere - this ensures improved safety and faster operation.



### Extra Valves with Variation

A well-known and usual hose routing to the end of the extensions means that 1 or 2 extra valves are fed in sturdy hose guides alongside the jib extension system. If further efficient protection of the hoses is required, 1 or 2 extra valves can be fed in internal hose reels and lie particularly well protected.



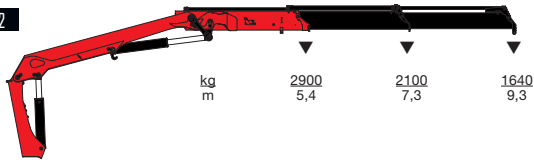
### Top Seat with Joystick Control

The crane is operated by joysticks in combination with foot levers. The Danfoss PVG 32 control valve with variable flow pump provides a quick and very precise control of movements. The lever sequence is: Left hand: "Slew" and "Jib". Left foot: "Grab". Right hand: "Rotator" and "Boom". Right foot: "Extension".

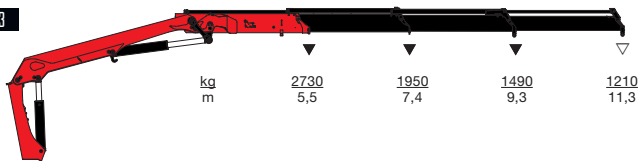


- power to lift

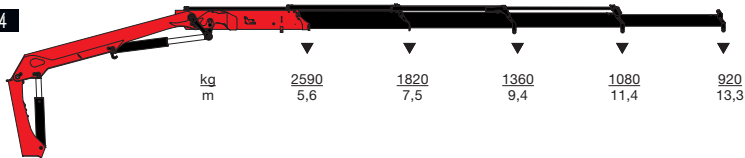
HMF 1710-L2



HMF 1710-L3



HMF 1710-L4



HMF 1710-L5



▼ Lifting capacity without manual extensions  
 ▽ Lifting capacity with manual extensions



- power to lift  
**HMF Group A/S**

Oddervej 200 · DK-8270 Højbjerg  
 Tel.: +45 8627 0800 · Fax: +45 8627 0744 · info@hmf.dk

[www.hmf.dk](http://www.hmf.dk)

Z008824-02

We reserve the right to introduce improvements and modifications