

1270G 8W

A large, stylized letter "G" with a yellow-to-green gradient and a grainy texture, positioned above the word "SERIES" in a bold, white, sans-serif font with a black outline.

G
SERIES

MORE POWER
AND PRODUCTION WITH
BETTER FUEL ECONOMY

MORE
UPTIME AND EASIER
DIAGNOSTICS

EXCELLENT
MANEUVERABILITY



MORE THAN
A MACHINE

JOHN DEERE 1270G 8W HARVESTER

The John Deere G-Series has been redesigned to deliver higher productivity, increased uptime, and improved fuel economy. The 1270G 8W provides high stability, excellent steep slope climbing ability, and ground pressure. Processing Power Control (PPC) with three processing levels according to tree size comes standard.

Accurate and CH7 boom

- Maximum reach
- Gross lifting to
- Slewing torque
- Slewing angle

Reliable and efficient harvester heads

- Both four- and two-wheel-drive are available
- Recommended harvester heads: H413, H414, H480C, H270 Series II, H415, and H215E

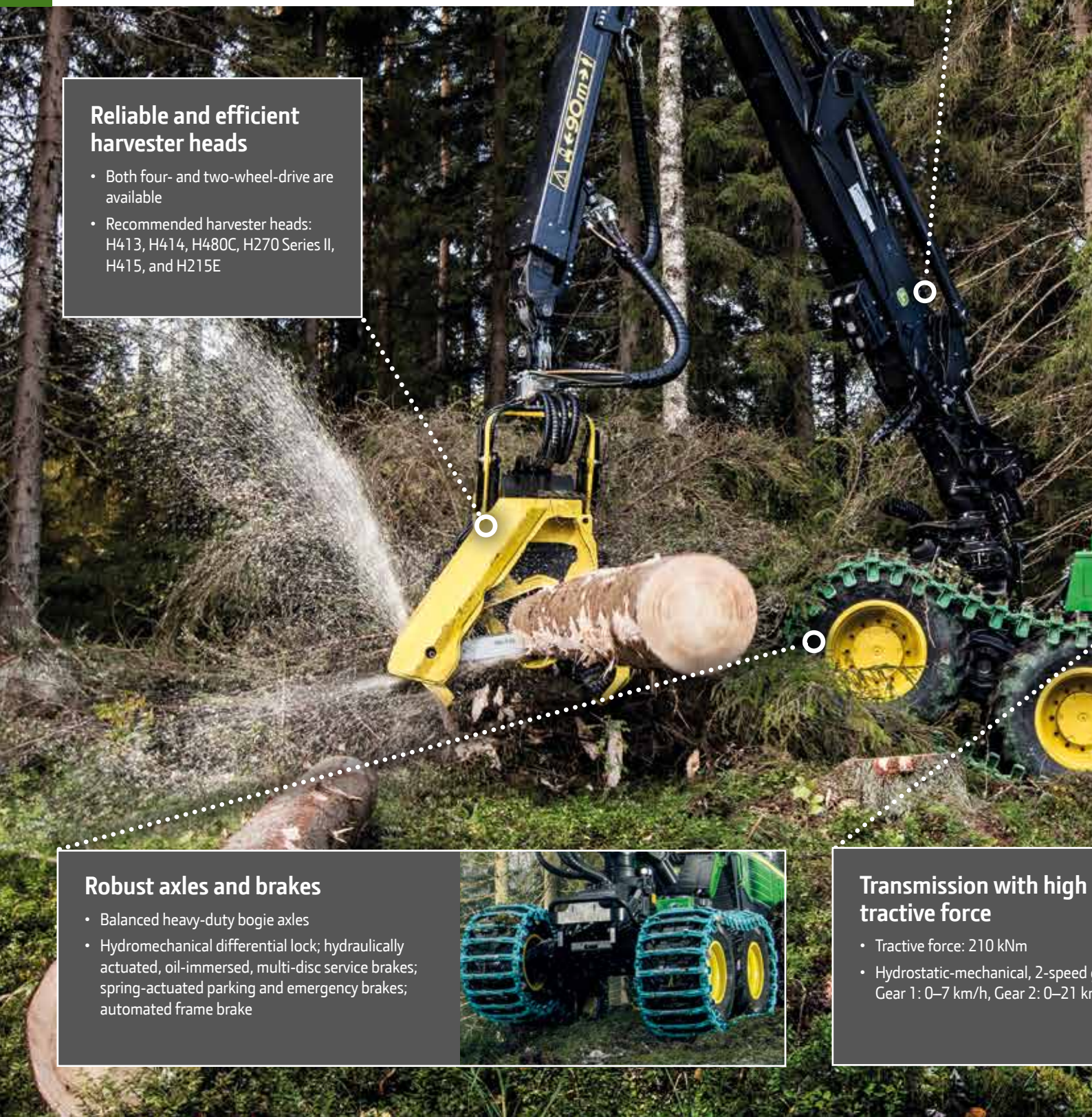
Robust axles and brakes

- Balanced heavy-duty bogie axles
- Hydromechanical differential lock; hydraulically actuated, oil-immersed, multi-disc service brakes; spring-actuated parking and emergency brakes; automated frame brake



Transmission with high tractive force

- Tractive force: 210 kNm
- Hydrostatic-mechanical, 2-speed
Gear 1: 0–7 km/h, Gear 2: 0–21 km/h



and efficient

ch: 8.6/10.0/11.7 m
orque: 197 kNm /
e: 50 kNm
: 220 deg.

Redesigned rotating and leveling cabin

- Automatic boom follow-through
- Rotating angle: 160 deg.
- Sideways tilt: 17 deg.
- Forward and backward tilt: 9 deg.
- Fixed-cabin option



Improved control

- Configurable Timbermatic™ H-16 control system
- Robust CAN bus with fewer connectors and improved diagnostics
- High-capacity controllers for all functions with fewer fuses and relays
- Remote Display Access, JDLink™, and TimberLink™ available

More uptime with service agreement

- Extended service intervals available via TimberCare™ service agreements
- Main service intervals at 1,500 and 3,000 hours, with intermediate service at 750 hours



Fuel efficient engine – more power and reliability

- EPA Final Tier 4/EU Stage IV emission-compliant John Deere PowerTech™ Plus 6090 turbocharged, charge-air-cooled, 6-cylinder, 9.0-l-displacement diesel engine
- Power: 200 kW at 1,600–1,900 rpm
- Torque: 1315 Nm at 1,200–1,400 rpm
- Fuel tank: 390 l, DEF tank: 23 l



gearbox:
m/h

1270G 8W

STEERING Proportional frame steering with mini lever
Turning angle ± 44 deg.

ELECTRIC SYSTEM

Voltage 24 V
Batteries 2 x 154 Ah
Alternator 150 A (28 V)
Lights Halogen: 10 work lights, 4 boom lights, and 6 thinning lights
LED lights optional

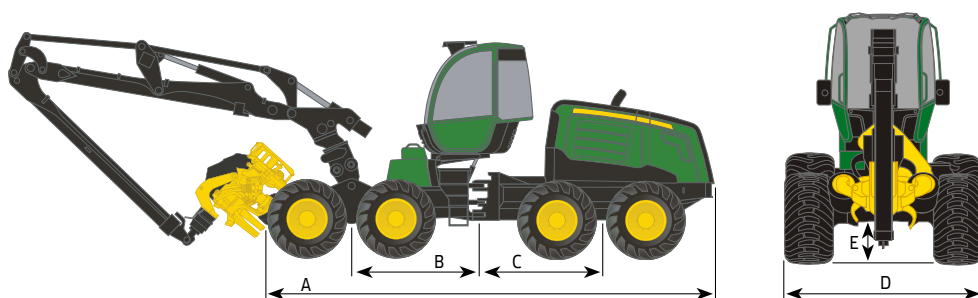
HYDRAULICS Load-sensing, power-adjustable, double-pump system
Pump capacities 190 cm³ and 180 cm³
Maximum operating pressure 28 MPa
Hydraulic tank 300 l

MEASUREMENTS*

1270G 8W

Length [A]	7930 mm
Front axle — Middle joint [B]	2150 mm
Rear axle — Middle joint [C]	2280 mm
Wheelbase [B+C]	4430 mm
Tires, front	26,5–20
Tires, rear	26,5–20
Width — 600 Series tires [D]	min 2750 mm
Width — 710 Series tires [D]	min 2950 mm
Outer turning radius — 710 Tires	7105 mm
Inner turning radius — 710 Tires	3990 mm
Transport height	3880 mm
Ground clearance, Middle joint [E]	715 mm
Minimum machine weight with harvester head	22 900 kg

*Please note: Measurements are guidelines only and may vary depending on production tolerances.



MORE INFORMATION ONLINE:

Scan the code with your phone or visit www.johndeere.co.uk/Forestry



JOHN DEERE

This brochure has been compiled for worldwide circulation. While general information, pictures and descriptions are provided, some illustrations and text may include options and accessories not available in all regions. For more information, please contact your local John Deere dealer. John Deere reserves the right to change specification and design for products in this brochure without notification. John Deere is not liable for any possible errors or omissions in this brochure.