

Compact²

Kramer Allrad
Compact telehandlers
1245 • 2506

1245
2506



kramerALLRAD®

The surprising winners: Bold. Compact. Dynamic.

SMART AND COMPACT. THE FORMAT FOR SUCCESS.

The new compact telehandlers from Kramer open up entirely new markets even within familiar branches of industry, and they are certainly in demand. This demand is a result of the machine's ultra-compact dimensions, making them the emerging stars of the plant hire business. They are ideal for gardening and landscaping, municipalities, construction industry and roadworks.

Their dynamic all-wheel drive, powerful hydraulics, high payload, unbeatable manoeuvrability, excellent off-road capability, low operating weight and, last but not least, sheer driving pleasure are the characteristic features of this brand-new category of plant.

They offer real innovation at the right time, and there is nothing more powerful than an idea introduced at the perfect time.



Power on top form.

Perfect balance: Quality with grace.



1 System carrier

The new compact telehandlers are agile and dynamic system carriers for many attachments and transport tasks.

2 Attachment areas

Maximum use of technical possibilities from front to rear: lots of front tool attachments, various trailer couplings and additional hydraulic functions at the rear.

3 Steering modes

The legendary Kramer all-wheel steering guarantees maximum manoeuvrability. The front-wheel steering of the 2506 is the perfect option for smooth road driving, and the crab steering mode can be a great help for precision work.

4 Comfort zones

When developing our vehicles we always give people the priority: comfortable workstation, precise hydrostatic drive with inching pedal, sensitive works hydraulics, easy servicing access – and all this in conjunction with dynamics and power that are just fun to work with.

5 Model lines

Kramer compact telehandlers open up a new dimension for High Balanced Handling. They demonstrate in a wholly new format what has already been proven many times over in our wheel loaders, tele wheel loaders and telehandlers: the legendary Kramer quality and reliability.

ALL-ROUND STRENGTHS. FROM PERFORMANCE TO VALUE-FOR-MONEY. FROM EASY HANDLING TO USER COMFORT. FROM FUNCTION TO DESIGN. A RADICAL RETHINK THAT OPENS UP A VISTA OF NEW PERSPECTIVES. ALL UNDERPINNED BY A SOLID STRUCTURE.



The new benchmark:
Productive agility.
The future has arrived.

1245
2506



- 1 Unrestricted operation even when constrained by low headroom. The compact telehandlers are perfectly suited to the conditions of city, factory, building yard and construction site, in function, form and dimensions.
- 2 The best tip for becoming a favourite all-rounder linking indoors and out: offering versatile utility that always has its place.
- 3 Its narrow profile broadens its range of application possibilities enormously. Now, even the tightest and narrowest sites can be tackled effectively using machine, rather than hand power.



Finding new avenues of deployment. Working more profitably. And all this with a real spring in your step.

Compact dimensions complement the agile all-wheel steering perfectly and give you a feeling of great confidence.

And you feel it straight away: this is quality with an all-new feel, opening up brand-new opportunities, as well being fun, and all with nimble manoeuvrability and incredible flexibility.



New efficiency:
One size fits all.
And no waiting around.

1245
2506



**From either/or to the far more profitable both/and:
one dimension with massive depth of field.**

Nothing is out of bounds for working as both a stacker and loader. Uncompromised high-performance and practicality: professionally designed and developed using brand components manufactured to "Made in Germany" standards. High expectations and hard-to-satisfy requirements are the best reasons for deciding on a compact telehandler from Kramer.



New intelligence: Packing the essentials into one compact bundle.

1245
2506



- A choice of steering modes to suit all operating situations:
- 1 All-wheel steering: constant 100 % manoeuvrability, security and power whatever the turning radius.
 - 2 Front-wheel steering: ideal for smooth and safe road driving (optional on the 2506).
 - 3 Crab steering: ideal for precise stacking when space is tight (optional on the 2506).



Power with a light touch. Low charge weight, high-visibility compact format, joystick console and a comfort cab with lighting, sun shade and 360° panoramic view.



High-power drive: the hydrostatic all-wheel drive with inching pedal, high ground clearance and off-road capability generate maximum power when and where it's needed.

Hydraulics with power in reserve: capable of lifting 2500 kg to a height of almost 6 m. Precise and sensitive steering via the joystick, and more than capable of meeting all the demands of the compact class.



Everything that you could possibly need: The 1245 is equipped with a secure canopy-cockpit, a driver's seat with durable synthetic leather upholstery and working lights front and back. A comfort cab with all-round glazing is available as an option. This makes the little 1245 ready to take on any task. One complete package: just like every Kramer.

The hydraulic quick-hitch system saves time, enhances security and improves workflow. It is perfectly suited to the compact telehandler and offers the ideal conditions for handling its outstanding versatility.

New composure: Progress and quality in every detail.



A tried-and-tested principle and the backbone of Kramer's long-term success: the one-piece chassis for perfect stability, a consistently high payload with no ifs and buts and an optimal power to weight ratio.



Power and quality that go a long way. The hydraulic boom is a small masterpiece in itself: from the high-grade steel through the tried-and-tested, well-protected hose guide to the perfect kinematics. Another feature to inspire your full confidence.

The compact telehandlers from Kramer are no small fry: they're big performers from the leading compact machinery specialist.

It's the experience and professionalism of Kramer that make all the difference. The robust and torsion-resistant frame, the key components from the world's leading manufacturers and the latest generation engines transform them into something extraordinary, from the 2506 model to the slimline 1245. The electronically regulated hydrostatic drive of the 2506 ensures exceptional driving performance and optimal efficiency. For additional traction, 100 % differential lock is available as an option.



1



2



3

The hydraulic quick-hitch system:
The snap-together link offering comfort, safety and optimal utility.

- 1 **Simply drive up** to the implement.
- 2 Through visual contact, **connect and secure** the tool with ease.
- 3 **Lock and unlock** the tool attachment without having to leave the driver's seat.

That's all there is to it. This is how to make the most of the versatility of the compact telehandler – with everything to gain. And no time to lose.



New supremacy:
Everything at a glance.
Everything within reach.
Everything well in hand.

1245
2506

- 1 Unimpeded visibility of the tool attachment and working area facilitates concentration on the essentials and helps ensure safe working.
- 2 Supreme cab comfort. Options with which to spoil yourself on the 2506: air conditioning, radio, adjustable steering column, air-sprung seat and heated cab windows.
- 3 The innovative joystick with illuminated switches is a high point of user-friendliness. It allows the boom raise/lower functions along with the tilting/dumping and drive direction selection functions to be controlled with just one hand.



The roomy comfort cab of the 2506 is pure ergonomic design: generous yet compact dimensions, individual adaptability, comfort layout and supreme functionality. A true cockpit, made-to-measure for every working day.



The care lavished on the technical details makes the machine. The enthusiasm for working with it produces the results.

The compact telehandlers from Kramer are as strong as they are agile. They are also built with the person using them in mind, so that he or she can work with them efficiently and master every possible situation. The perfect all-round visibility, the ergonomic layout of the controls and the easy access to the maintenance points underline the practically-orientated design.

- 4 The engine hatch of the 1245 is removable. This offers superb access to the key components for all maintenance work.
- 5 The engine hatch of the 2506 is self-releasing and opens wide by means of pneumatic struts – a small but useful help to the everyday working routine.

New value for money:
Quite simply, the perfect format
for lasting cost-effectiveness.

1245
2506



The rear of the compact telehandler is a power centre for so many areas of use: tow coupling, tipper connection and hydraulic auxiliary control circuit are just some of the many possibilities for making the most of the machine's power sources.

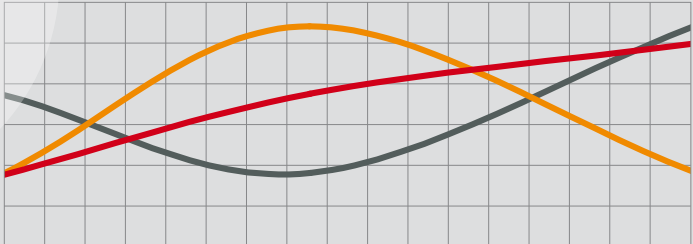
Forever with an eye on the future and following the latest trends, to make the most of the deployment possibilities:

Versatility, manoeuvrability, durability, high availability and attractive resale value, as only a top brand machine is capable of. This all adds up to Kramer being the right choice.

The compact telehandlers from Kramer are robustly built and have an ideal power to weight ratio. They are low on fuel consumption, low on maintenance and servicing and economical to transport.

A good-value decision all round.

— Output kW
— Torque Nm
— Fuel consumption g/kWh



5 model ranges:
Perfect formation.
Ideal balance of payload,
performance and bucket capacity.

ALL KRAMER LOADERS COME OFF THE PRODUCTION LINE OF A LEADING COMPACT MACHINERY MANUFACTURER BASED IN THE HEART OF EUROPE. THEY BEAR THE HALLMARK OF QUALITY, STABILITY AND CONSISTENCY THAT YOU CAN RELY ON: TYPICALLY “MADE IN GERMANY”. EVERY MODEL IS BUILT TO LAST AND IS A MODULAR ELEMENT OF AN OVERALL SYSTEM.

ONE PART FITS INTO ANOTHER, AND EVERYTHING IS FUTURE-PROOFED, FOR LONG-TERM COST-EFFECTIVENESS.

MUNICH
Pfullendorf



	Max. engine output	Bucket capacity	Max. payload	Charge weight *	Turning radius (tyres)	Max. speed	Max. load-over height
MINI-LOADERS							
350 Canopy	27 kW / 37 hp	0.35–0.55 m³	970 kg	1665 kg	1950 mm	0–20 kph	2680 mm
350 CAB	27 kW / 37 hp	0.35–0.55 m³	970 kg	1740 kg	1950 mm	0–20 kph	2680 mm
180	23 kW / 31 hp	0.3–0.4 m³	950 kg	1860 kg	1940 mm	0–20 kph	2458 mm
280	28 kW / 40 hp	0.65–1.1 m³	1900 kg	3300 kg	2430 mm	0–20 kph	2820 mm
WHEEL LOADERS							
750	45 kW / 61 hp	0.75–1.15 m³	2300 kg	4200 kg	2550 mm	0–30 kph	2915 mm
850	45 kW / 61 hp	0.85–1.3 m³	2350 kg	4500 kg	2550 mm	0–30 kph	3100 mm
950	58 kW / 79 hp	0.95–1.6 m³	2500 kg	4700 kg	2780 mm	0–30 kph	3120 mm
1150	58 kW / 79 hp	1.15–1.8 m³	3500 kg	5900 kg	2850 mm	0–30 kph	3235 mm
380	45 kW / 61 hp	0.75–1.15 m³	2400 kg	4300 kg	2900 mm	0–40 kph	2915 mm
480	58 kW / 79 hp	0.85–1.3 m³	2600 kg	4750 kg	2900 mm	0–40 kph	3100 mm
580	58 kW / 79 hp	0.95–1.5 m³	2750 kg	4900 kg	2900 mm	0–40 kph	3050 mm
680	58 kW / 79 hp	1.05–1.6 m³	3100 kg	5650 kg	2950 mm	0–40 kph	3050 mm
780	58 kW / 79 hp	1.15–1.8 m³	3500 kg	6100 kg	2950 mm	0–35 kph	3200 mm
880	88 kW / 120 hp	1.5–2.5 m³	4500 kg	8400 kg	3450 mm	0–35 kph	3530 mm
TELE WHEEL LOADERS							
750T	45 kW / 61 hp	0.75–1.15 m³	2000 kg	5100 kg	2550 mm	0–30 kph	4510 mm
680T	58 kW / 79 hp	0.95–1.5 m³	2600 kg	5950 kg	2950 mm	0–40 kph	4450 mm
COMPACT TELEHANDLERS							
1245	23 kW / 31 hp	0.4–1.03 m³	1200 kg	2530 kg	2607 mm	0–20 kph	4130 mm
2506	50 kW / 68 hp	0.85–1.8 m³	2500 kg	4500 kg	3670 mm	0–30 kph	5600 mm
TELEHANDLERS							
3307	88 kW / 120 hp	1.2–2.5 m³	3300 kg	7200 kg	3600 mm	0–40 kph	7050 mm
4507	88 kW / 120 hp	1.2–3.0 m³	4400 kg	8100 kg	3600 mm	0–40 kph	7050 mm
4009	88 kW / 120 hp	1.2–3.0 m³	4000 kg	8600 kg	3850 mm	0–40 kph	8825 mm

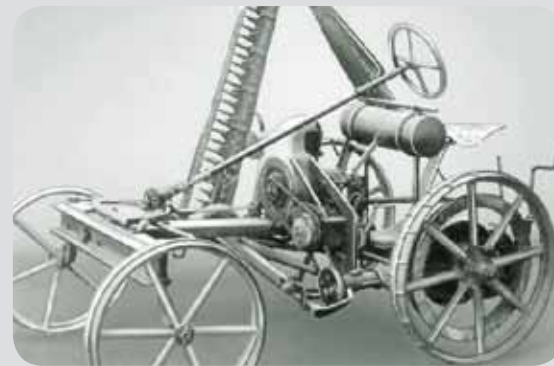
* Vehicle weight of basic model with standard bucket

Innovation born of tradition: Robust program. State-of-the-art manufacturing. Competent partners.

High Balanced
Handling®

Genuine competence only becomes established when know-how, ability and customer-orientation have been consolidated over many years to become a distinctive style. The success story of Kramer is telling proof of this adage:

- **Over 50 years of experience** in the development, design and production of intelligent, durable and versatile construction machinery. Structures that have grown organically.
- **Innovation bringing progress to life.** Kramer constantly strives to make things work better. This is how the brand has become the acknowledged pioneer and market leader that it is today.
- **Consistent customer orientation, personal contacts,** the flexibility and short decision pathways of a medium-sized enterprise, along with the security of guaranteed and rapid spare parts procurement with no red tape.
- **A broad one-stop product and service spectrum:** "Made in Germany", in the Bodensee region. Development, production, purchasing and sales all on one site.
- **The most up-to-date manufacturing facilities with in-house paint shop** and an experienced workforce, who personally invest a great deal of value in the quality of "their machines".
- **Robust, long-standing trading partners** and well-trained contacts who represent Kramer out of conviction and for whom one thing counts above all else: loyal and contented customers.



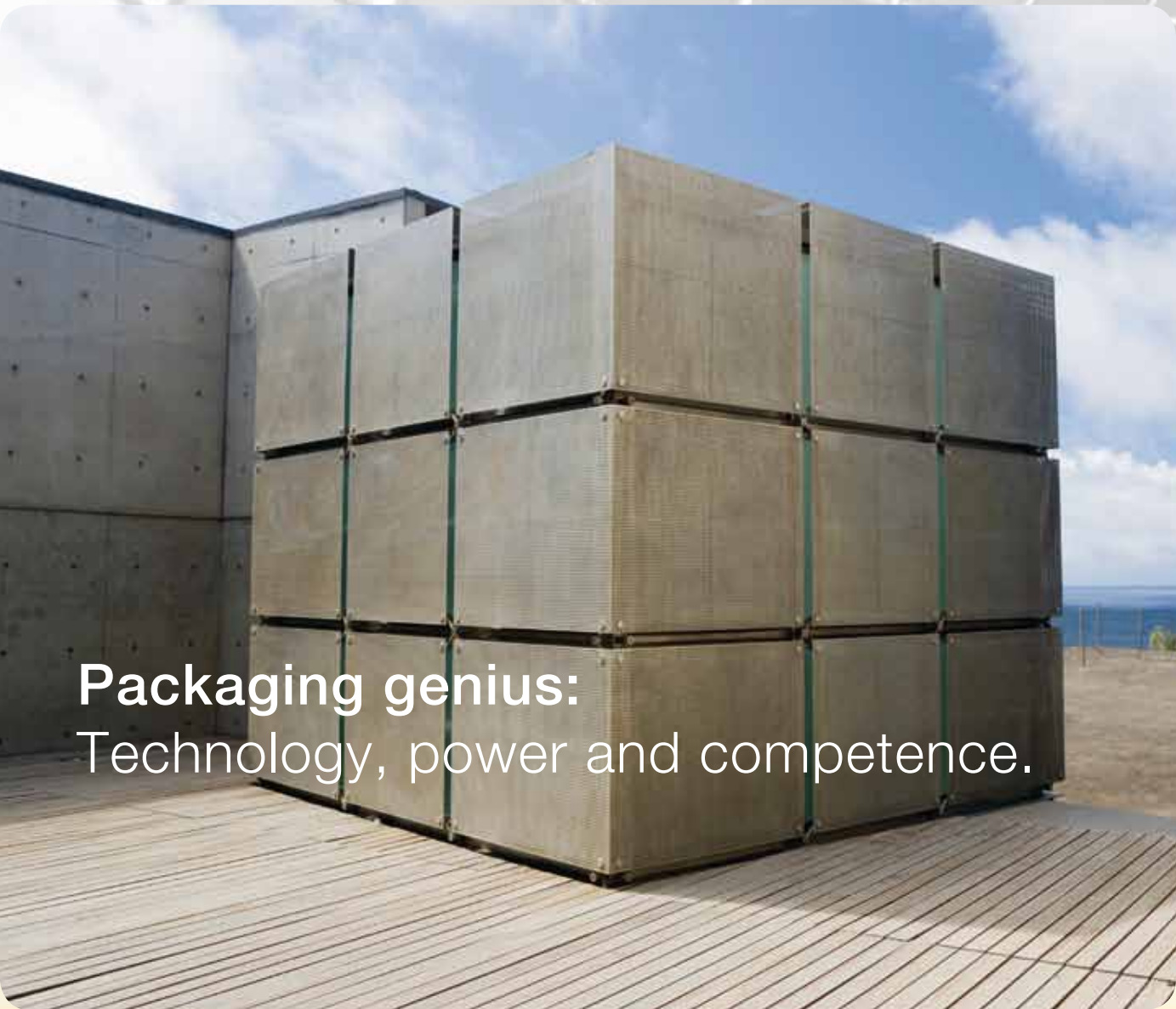
1925 Founding of the company as a manufacturer of motor mowers.
1963 Kramer is the first manufacturer to present a hydraulic quick-hitch mechanism.

1965 The innovative load stabiliser for the boom arm is developed by Kramer engineers.
1987 The first all-wheel-steering wheel loader is launched on the market. The steering system continues to be found in all Kramer vehicles.

1992 In order to satisfy customer requirements, Kramer develops a wheel loader with telescopic boom. The extra pallet height and reach give customers what they were looking for.
2000 The Neuson and Kramer companies merge to become Neuson Kramer Baumaschinen AG, a company specialising in the development and manufacturing of compact machinery.

2003 Kramer presents the first wheel loader series with stepless high-speed drive ("Ecospeed") and highway-certified trailer coupling.
2005 A new vehicle segment – the telehandler – is developed and unveiled. Through cooperation with the agricultural machinery manufacturer, Claas, telehandlers are successfully marketed to the agricultural sector.

2007 A new company is born: Neuson Kramer Baumaschinen AG and Wacker Construction Equipment AG come together to form Wacker Neuson SE, a comprehensive provider of Light and Compact Equipment.
2008 Due to increasing demand and the expansion of the product range, Kramer builds a new factory from scratch in Pfullendorf. This is one of the most up-to-date manufacturing sites in Europe.

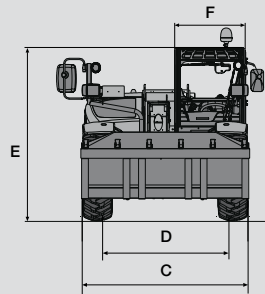


Packaging genius:
Technology, power and competence.

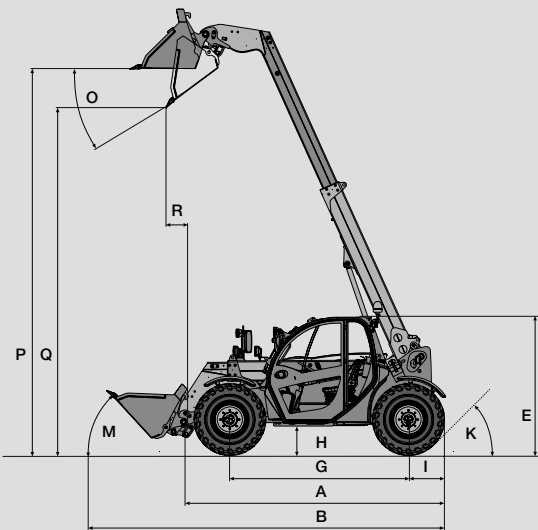
DIMENSIONS

	1245	2506
A Length incl. quick hitch	2916 mm	4230 mm
B Length with standard bucket	3879 mm	4958 mm*
C Max. width	1560 mm	1960 mm
D Track width	1296 mm	1660 mm
E Height to cab roof	1940 mm	1980 mm
F Inside cab width	662 mm	825 mm
G Wheelbase	1920 mm	2650 mm
H Ground clearance	290 mm	302 mm
I Centre of rear axle to end of vehicle	391 mm	620 mm
K Rear approach angle	80°	80°
L Crowd angle pallet forks down	8°	21° / 21°
M Crowd angle standard bucket down	44°	45° / 45°
N Dump-out angle pallet forks up	66°	45° / 63°
O Dump-out angle standard forks up	31°	22° / 40°
P Load-over height	4130 mm	5600 mm
Q Dump height	3600 mm	5280 mm
R Dump reach	543 mm	680 mm
S Max. lift height	4300 mm	5730 mm

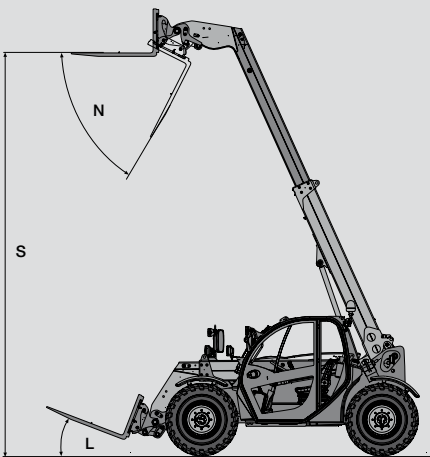
* With teeth



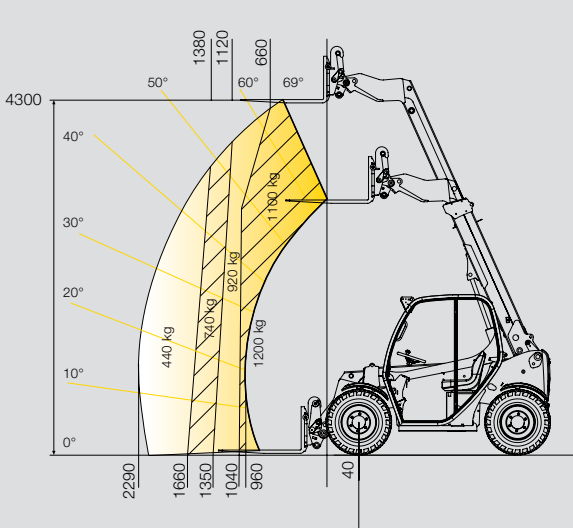
2506
With standard bucket and standard tyres
(front view)



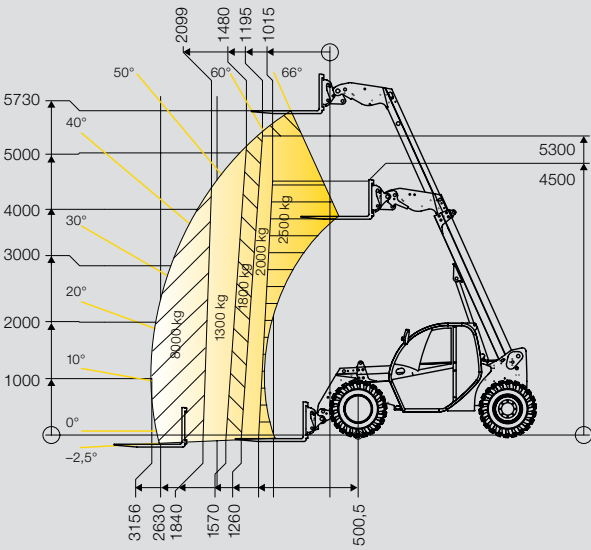
2506
With standard bucket and standard tyres



2506
With pallet fork and standard tyres



1245
Load diagram (with load centre 500 mm)



2506
Load diagram (with load centre 500 mm)



OPERATIONAL DATA

1245

2506

Bucket capacity	0.4 – 1.03 m³	0.85 – 1.8 m³
Weight without tool attachment	2530 kg	4500 kg
Turning radius tyres	2607 mm	3670 mm
Turning radius pallet forks	3505 mm	4500 mm
Total swing angle of tool carrier	148°	132°/150° (optional)



ENGINE

Make / Type / Model	Yanmar 3TNV82A-BDWM water-cooled	Deutz TD 2009 L04 water-cooled
Output	22 kW / 30 hp @ 3000 rpm	50 kW / 68 hp @ 2800 rpm
Max. torque	83 Nm @ 1400 rpm	200 Nm @ 1800 rpm
Engine displacement	1331 cm³	2290 cm³
Emissions	Tested and certified as per 97/68 EC, emissions standard level 3	



POWER TRANSMISSION

Drive	Hydrostatic	Hydrostatic
Drive speed	0 – 7 km/h, 0 – 20 km/h	0 – 7 km/h, 0 – 20 km/h 0 – 30 km/h (optional)
Axles	Planetary axles	Planetary axles
Total oscillation angle	14°	20°
Differential lock	100 % in the front axle (optional)	100 % in the front axle (optional)
Service brake / Parking brake	Front axle disc brake	Front axle disc brake
Standard tyres	10.0/75-15.3 AS	12.5-18 MPT04



STEERING AND WORK HYDRAULICS

Mode of operation	Hydrostatic all-wheel steering with final position synchronisation	
Max. steering angle	2 x 38°	2 x 38°
Work pump	Gear wheel	Gear wheel
Flow rate	42 l/min 75 l/min (optional)	89 l/min
Pressure	240 bar	235 bar



KINEMATICS

Max. payload	1200 kg	2500 kg
Max. lift height	4300 mm	5730 mm
Back angle (bucket)	43°	45° / 45°
Dump angle (bucket)	31°	22° / 40° (optional)
Payload at max. lift height	1200 kg	1800 kg
Payload at max. span	440 kg	800 kg
Lift height at maximum load	4300 mm	4500 mm
Span at maximum load	1040 mm	1260 mm
Max. span (pallets)	2290 mm	3156 mm
Scraping depth	112 mm	150 mm*



CAPACITIES

Fuel tank	25 l	100 l
Hydraulic fluid tank	40 l	75 l
Hydraulic system	45 l	130 l
Raising lift ram	6.2 sec	6.0 sec
Lowering lift ram	5.1 sec	4.0 sec
Extending extension ram	5.1 sec	5.6 sec
Retracting extension ram	3.9 sec	3.8 sec
Tilt	2.6 sec	3.0 sec
Dump	2.4 sec	2.5 sec



NOISE EMISSIONS

ELECTRIC SYSTEM

Operating voltage	12 V	12 V
Battery	77 Ah	74 Ah
Alternator	55 A	80 A
Starter	1.7 kW	2 kW

STANDARD EQUIPMENT

1245 • 2506

CAB

Excellent all around visibility from a spacious and comfortable work environment for increased safety and efficiency. Optimised visibility at maximum dump height. All-round view when in transport position, thanks to the laterally placed engine. Extremely roomy cab.

- 1245** Cockpit canopy with large, curved side windows.
- 2506** Soundproofed, vibration-insulated comfort cab with panoramic front windscreen.

Instrument panel: Neatly designed instrument panel with control lights and ergonomically arranged controls. Overload warning mechanism in field of view of driver.

Joystick console: Ergonomic layout of driver's control console with

- Joystick for raising/lowering and tilting in/tilting out the boom with switch for selecting the drive direction
- Extending/retracting telescopic boom arm with joystick

2506 Actuation of 3rd control circuit on joystick

Driver's seat: Mechanically-sprung comfort seat with seat belt, weight adjustment, backrest adjustment and horizontal adjustment.

- 1245** Synthetic leather
- 2506** Fabric cover

2506 Sun shade

Rear-view mirrors: Large outside mirrors, foldable to notched positions on either side.

12 V electric socket

LIGHTS

Front and rear working lights

- 2506** Headlights
- Indicators
- Brake lights
- Cab lights

ENGINE HATCH

- 1245** Entirely removable.
- 2506** Self-releasing, wide-opening by means of pneumatic spring for optimal maintenance access.

QUICK-HITCH FACILITY

Mechanical

ENGINE AIR INTAKE

Via air filter with integrated safety cartridge.

OPTIONS

1245 • 2506

CAB

- 1245** Front windscreen with wiper, rear windscreen, fully glazed cab with heating, ventilation and front wiper, highway-certified lighting.
- 2506** Air-sprung driver's comfort seat, radio set, additional working lights front and rear, air-conditioning, adjustable steering column, right and rear heated cab windows.

PERFORMANCE

Hydraulic quick-hitch plate

Electric socket for front and rear tool attachments

Unpressurised front reflux

Low-speed control and manual throttle

Various quick-hitch systems

Front and/or rear hydraulic control circuit

Tipper connection

100 % differential lock on front axle

1245 **Hydraulic 3-point connector** at rear (Cat. 1)

Hydraulic PTO 540 rpm

2506 **Hydraulic trailer brake valve**

Fully automatic central lubrication unit

Front-wheel-steering and crab steering

Load stabiliser

High-speed drive 30 kph

Proportional actuation of 3rd control circuit and telescopic boom

Performance kinematics with 150° swing angle

PREHEATING

Engine oil

Hydraulic fluid

TYRES

- 1245** Construction machinery tyres 10-16.5
Tractor tyres 31x15.5-15
- 2506** Construction machinery tyres 14.5-20
Industry tyres 335/80-18
Tractor tyres 12.5-18, 12.5-20, 405/70-20

SAFETY & SECURITY

- Rotary beacon
- Protective grille for front windscreen
- Acoustic reversing warning system
- Battery master switch
- 2506** Engine immobiliser
- Puncture kit
- Tilt ram lock

* Standard tyres

We reserve the right to make modifications without notice. No responsibility is taken for the accuracy of this information. The provisions of the contractual agreement shall be considered definitive.

You won't find the original just anywhere.

www.kramer.de/Haendler

10/2010 art.nr. 1000245141



Kramer-Werke GmbH
Wacker Neuson Straße 1
D-88630 Pfullendorf
Tel. 00 800 90 20 90 20
Fax +49(0)7552 92 88-234
info@kramer.de
www.kramer.de



kramerALLRAD®