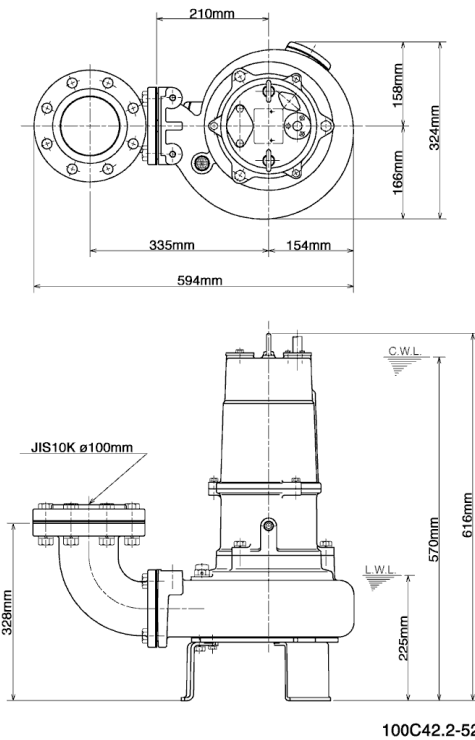
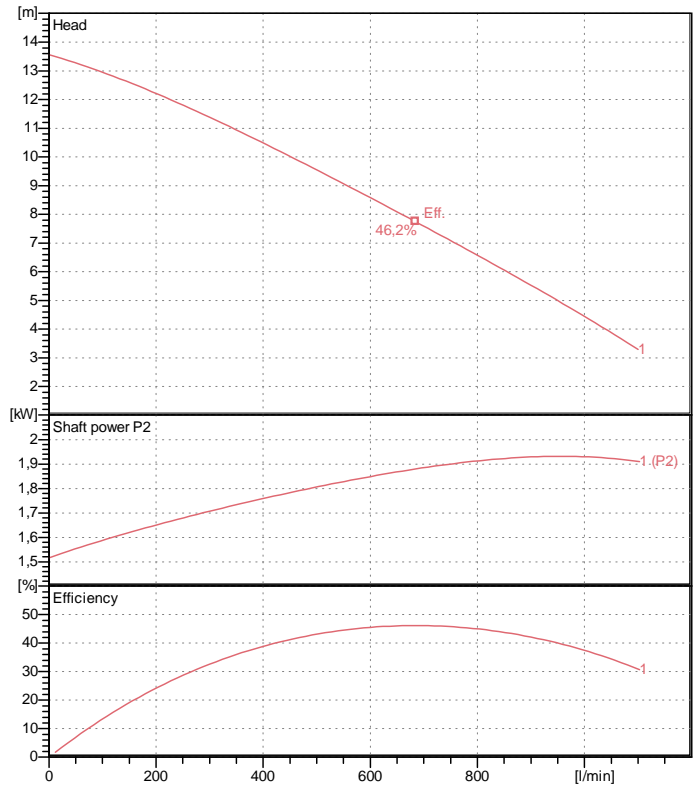


# Data sheet 100C42.2-52



100C42.2-52

CWL: Continuous running water level  
LWL: Lowest running water level



## Specification

Electric submersible pump with cutter mechanism  
Degree of protection IP 68  
Depth of submersion max. 40 m  
Type of impeller Single channel impeller  
Free passage 44 mm  
Suitable for:  
sewage water and liquids carrying solids

## Electric motor

Dry-type submersible induction motor  
Insulation class E 4Poles 1420 1/min  
Starting mode Directly  
Rated voltage 400 V 50 Hz 3~  
Power uptake 2,85 kW  
Rated power 2,20 kW  
Rated current 5 A  
Start current 32,0 A

## Cable

10m H07RN-F 4Cx1,5mm<sup>2</sup>

## Motor Protection

Circle thermal protector  
(snap-action bi-metal device)

## Shaft seal

Double inside mechanical seal in oil bath  
additional lubrication by oil lifting device

Primary seal  
Silicon carbide on silicon carbide  
Secondary seal  
Silicon carbide on silicon carbide

## Bearings

Shielded ball bearings, maintenance-free

## Materials

Impeller  
FC20 (EN-GJL-200) + Tungsten carbide  
Pump casing FC200 (EN-GJL-200)  
Suction cover FCD700 (EN-GJS-700-2)  
Motor Frame FC200 (EN-GJL-200)  
Shaft Stainless steel SUS420J2

## Discharge size

4" (100mm) JIS 10K screwed-in mating flange  
guide rail fitting optional

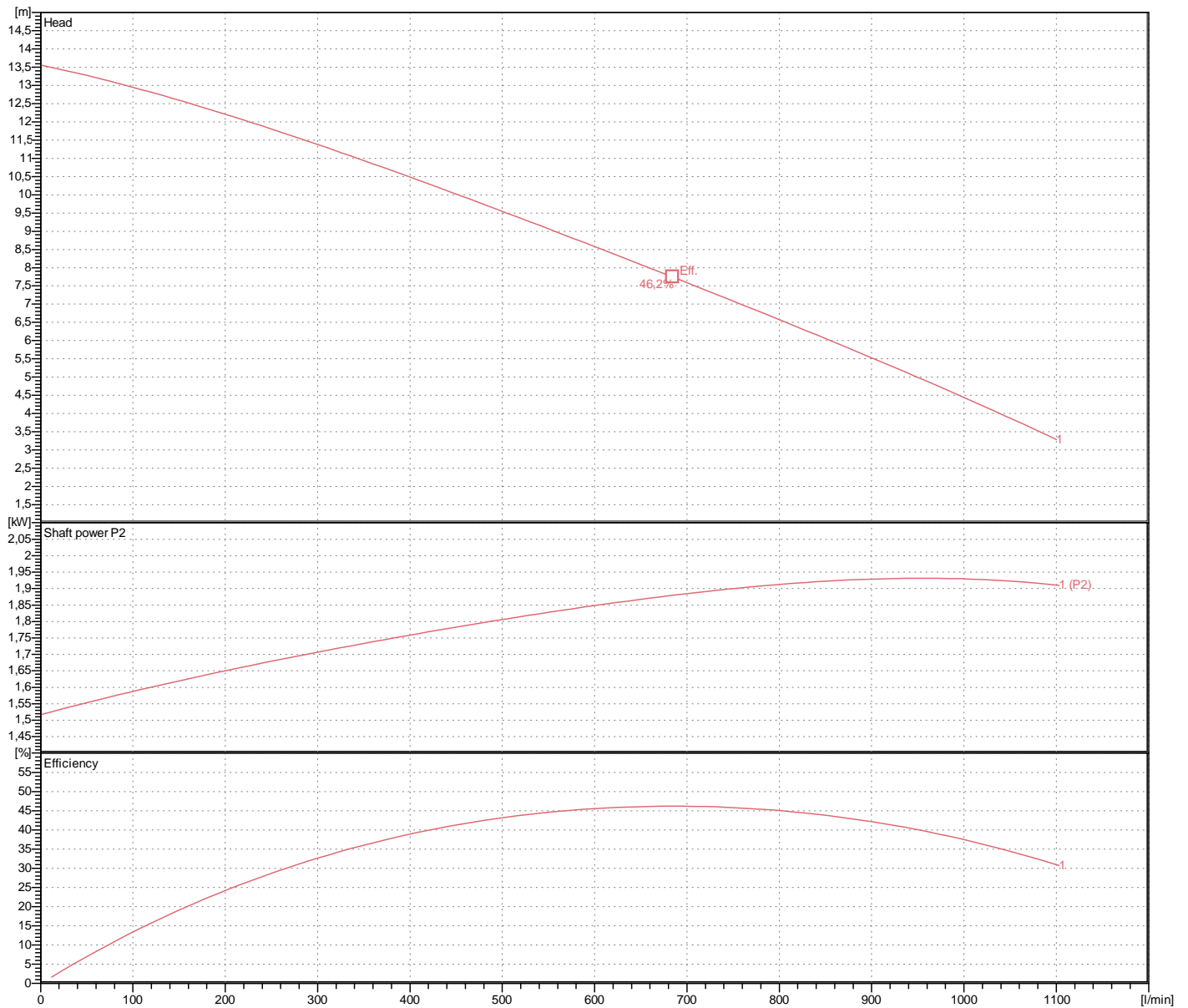
## Weight

70 kg (dry weight of the pump only without cable)

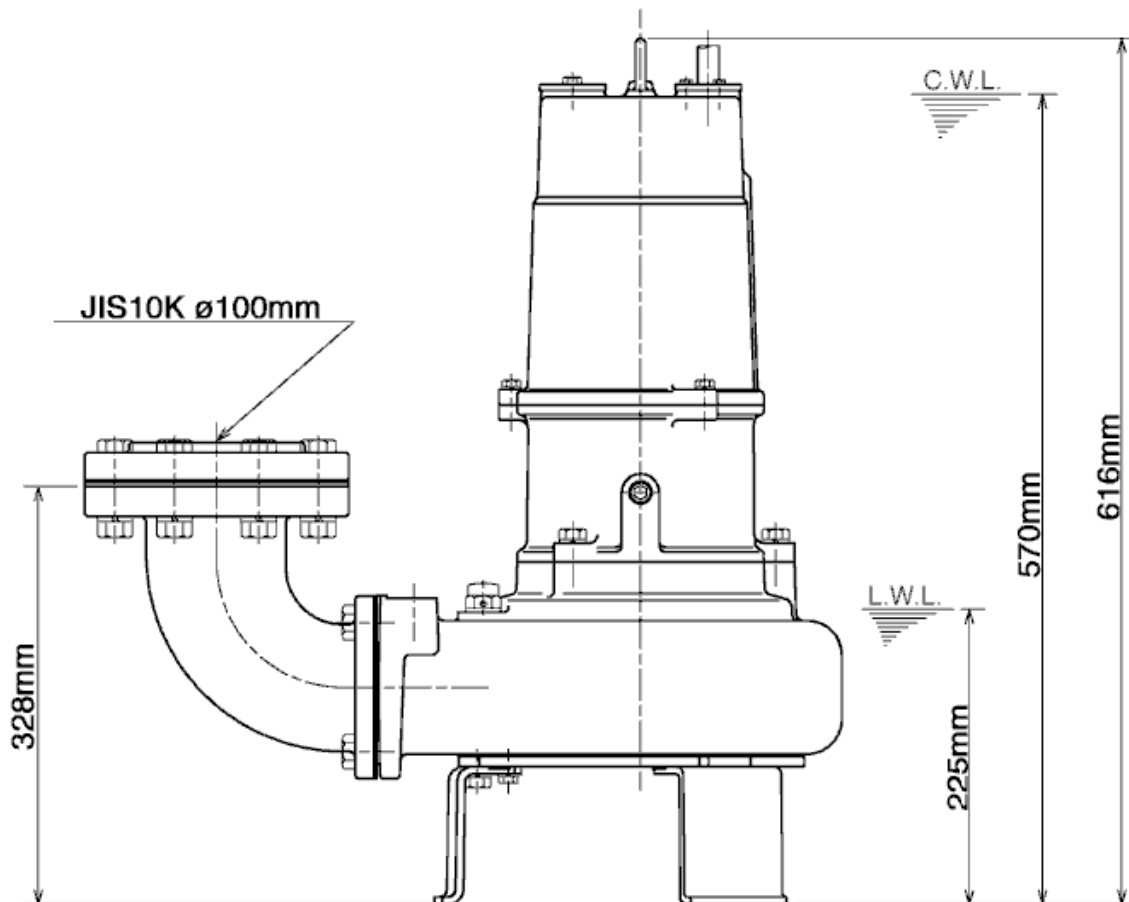
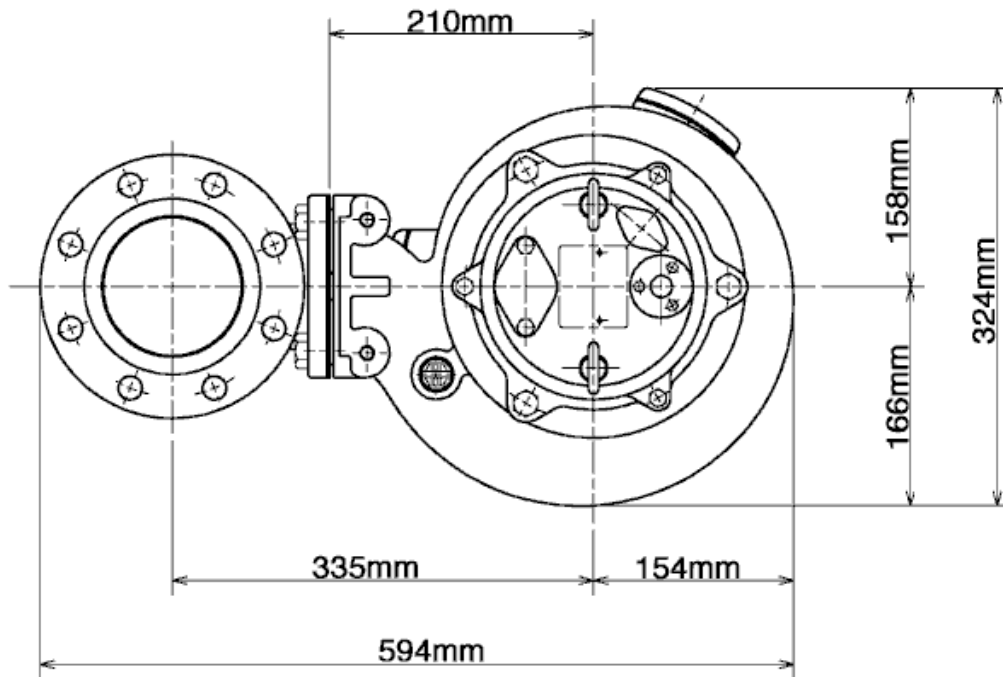
# Performance curve

## 100C42.2-52

Discharge port	4"
Head	13,6 m
Flow	1100,2 l/min
Rated power	2,20 kW
Power input	2,85 kW
Phases	3~
Voltages	400 V
Frequency	50 Hz
Rated current	5 A
Starting current	32,00 A
Number of poles	4
Speed	1420 1/min
Starting mode	Directly
Insulation class	E



# Dimensions 100C42.2-52



100C42.2-52

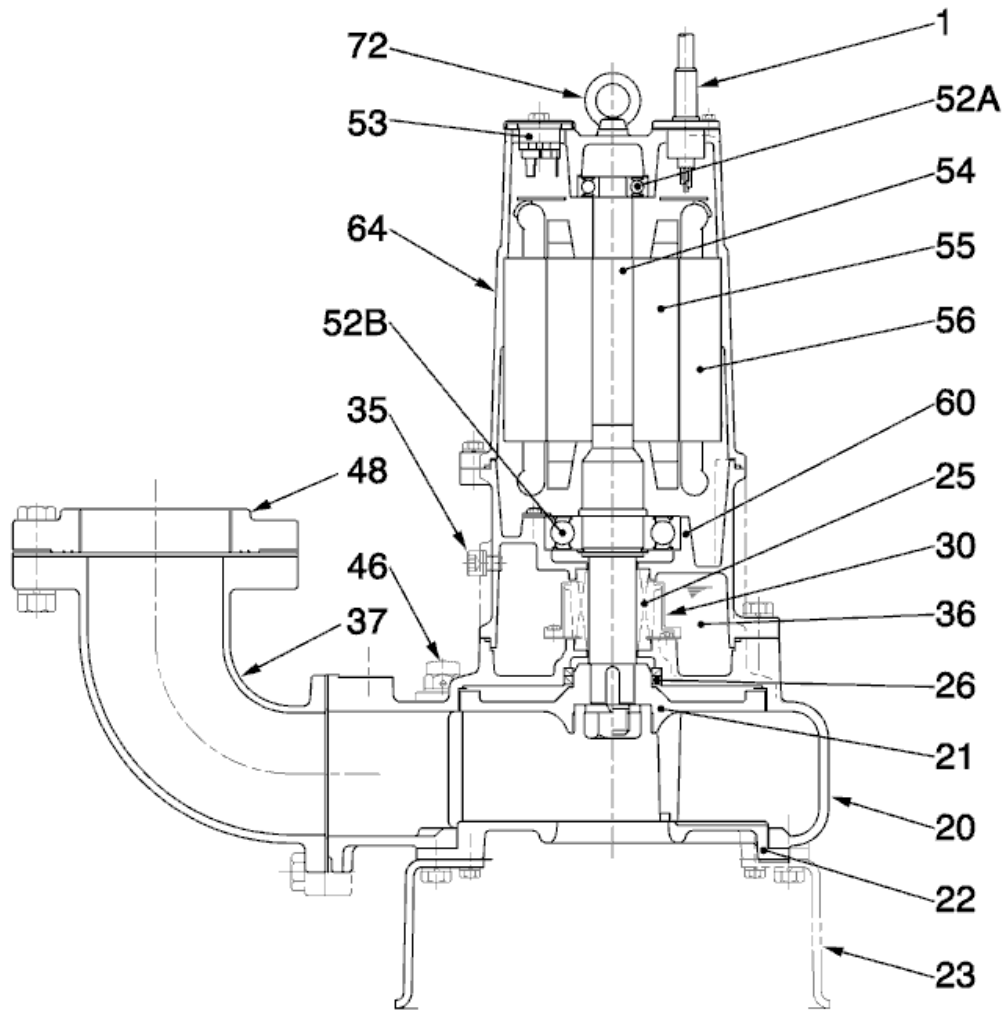
CWL: Continuous running water level  
LWL: Lowest running water level

 **TSURUMI PUMP**

Tsurumi Europe GmbH  
04.11.2011 V.14/29.09.2011

Heltorfer Str. 14 \* 40472 Düsseldorf \* Germany  
Tel.: +49-211-4179373 sales@tsurumi.eu  
Fax: +49-211-4791429 www.tsurumi.eu

# Sectional drawing 100C42.2-52



100C42.2-52

No.	Denomination	Remark	No.	Denomination	Remark
1	Cable	H07RN-F	54	Shaft	Stainless steel SUS420J2
20	Pump casing	FC200 (EN-GJL-200)	55	Rotor	.
21	Impeller	FC20 (EN-GJL-200) + Tungsten carbide	56	Stator	.
22	Suction cover	FCD700 (EN-GJS-700-2)	60	Bearing Housing	FC200 (EN-GJL-200)
23	Stand support (3x)	Construction steel SS400	64	Motor Frame	FC200 (EN-GJL-200)
25	Mechanical seal	H-30A	72	Eye screw	Stainless steel SUS304
26	Oil seal	TC456812			
30	Oil distributor	Plastic			
35	Oil screw	Stainless steel SUS304			
36	Lubricant	Turbine oil (ISO VG32)			
37	Discharge bend	FC200 (EN-GJL-200)			
46	Air vent screw	Nylon			
48	Screwed Flange	FC200 (EN-GJL-200)			
52A	Upper bearing	6304ZZC3			
52B	Lower bearing	6307ZZC3			
53	Motor Protector	.			